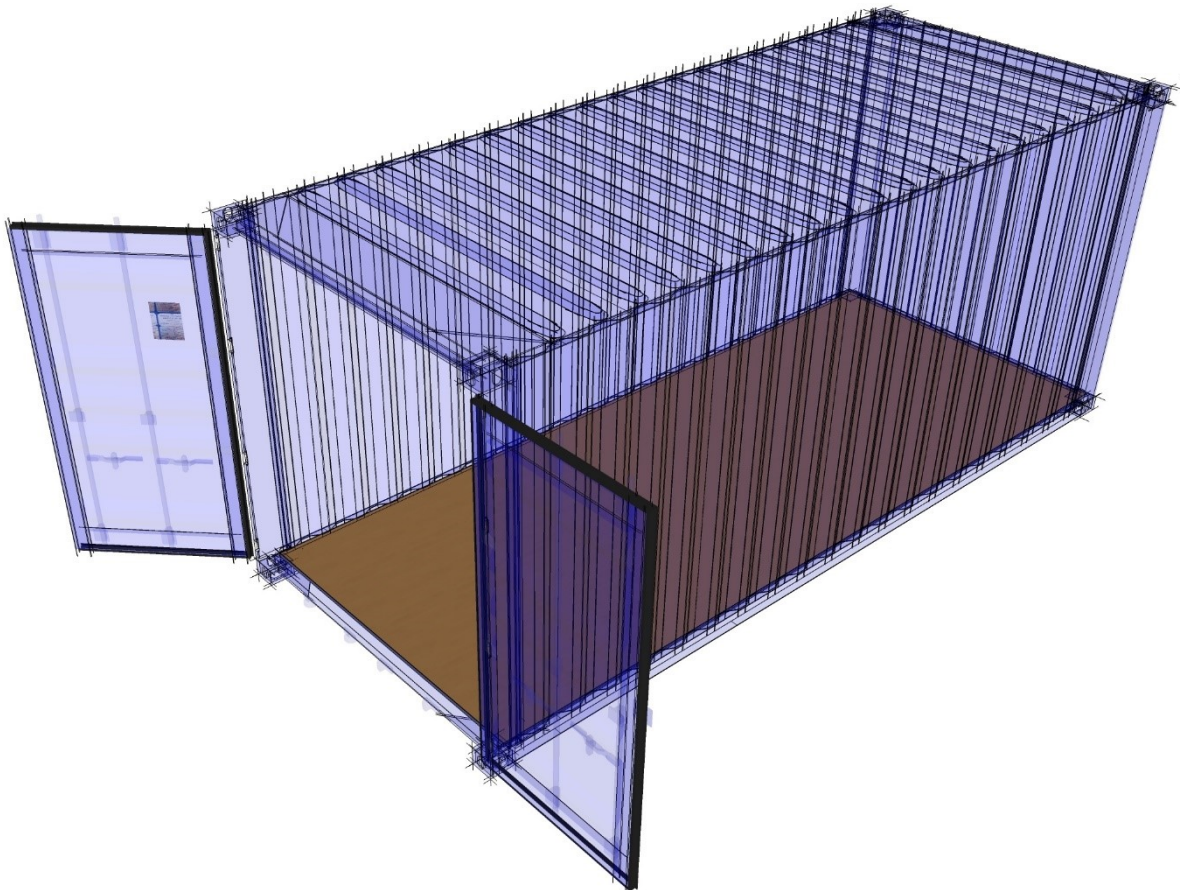
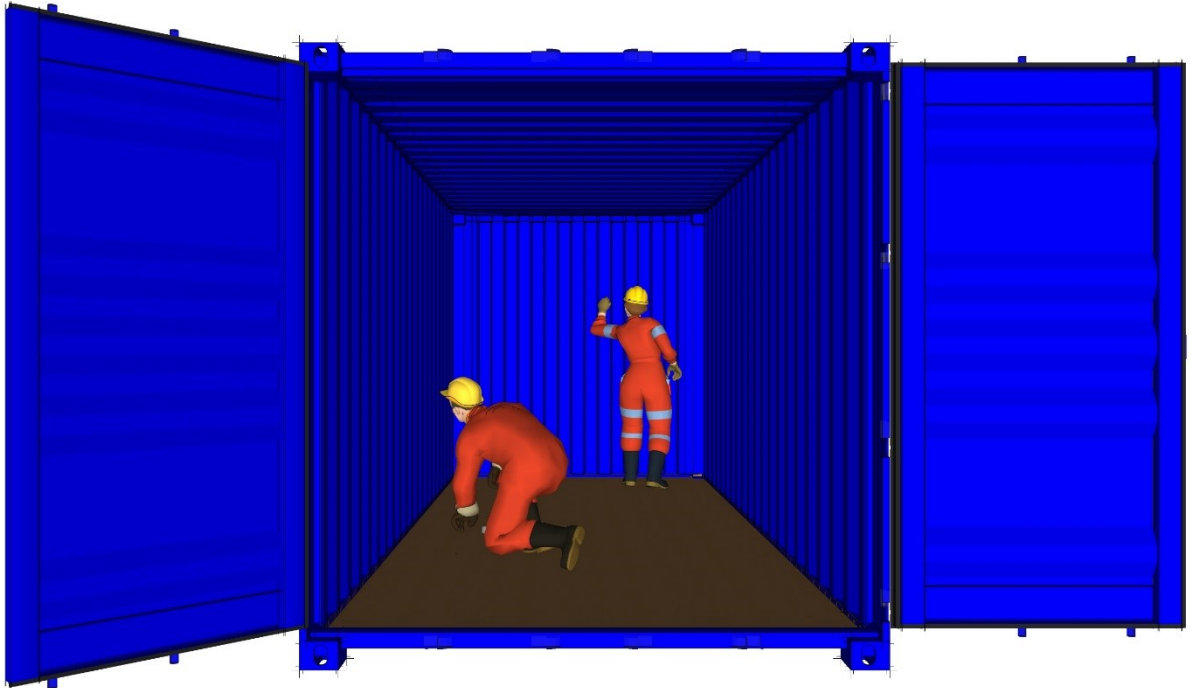


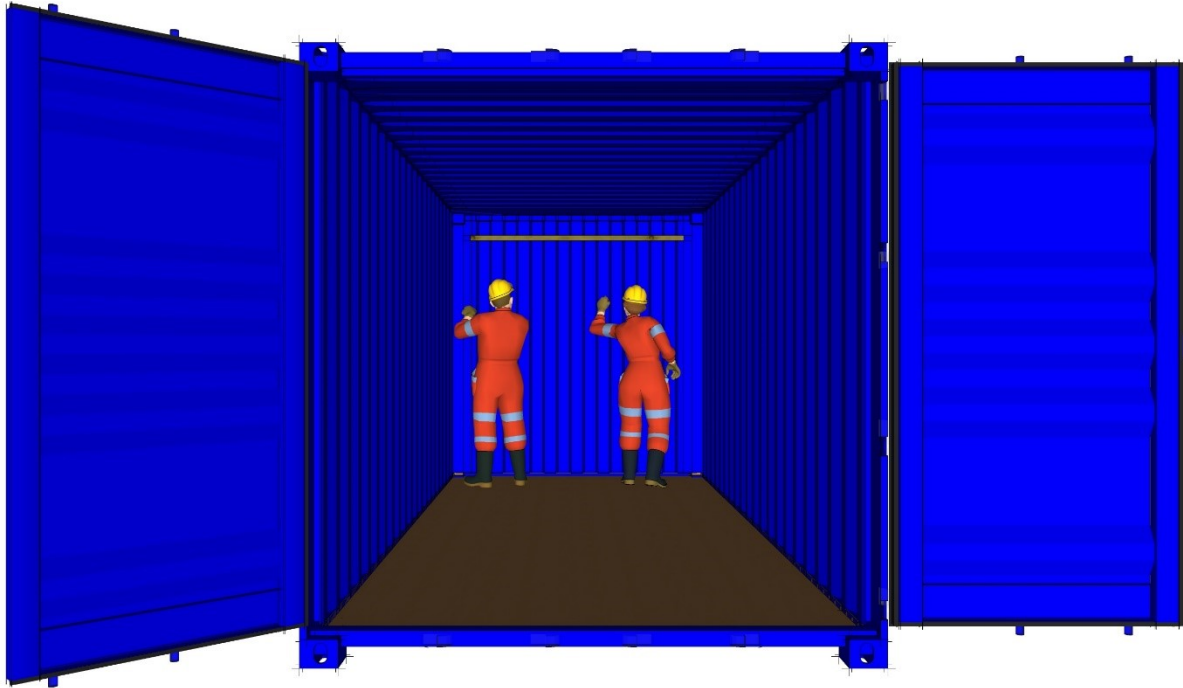


SOGECO S.A.
L I V I N G

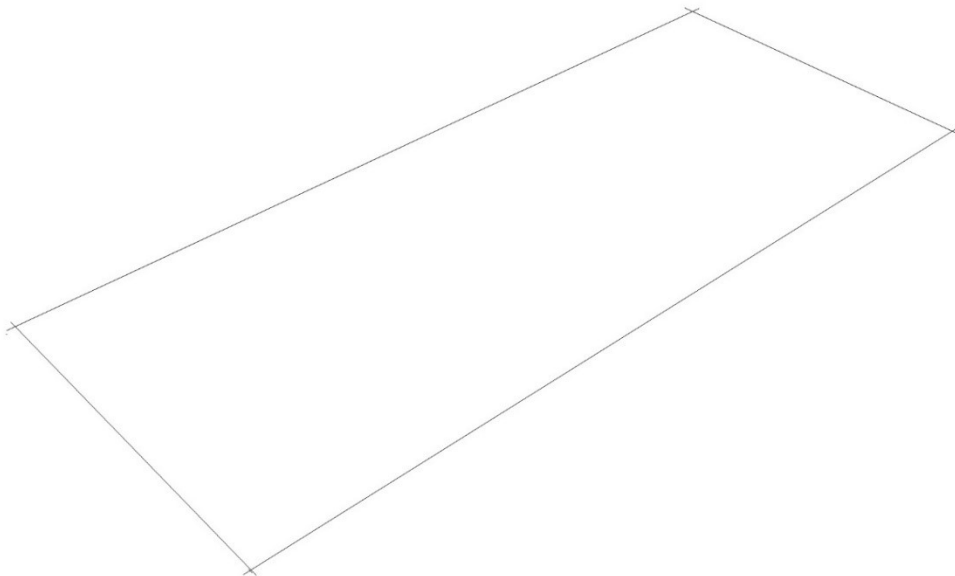
INSTALLATION MANUAL
FOR 20FT. 'DRY' SPEEDY KIT
(Concealed Electrics – Mineral Wool Panel)



STEP 1: Clean the interior 20ft Maritime Container.



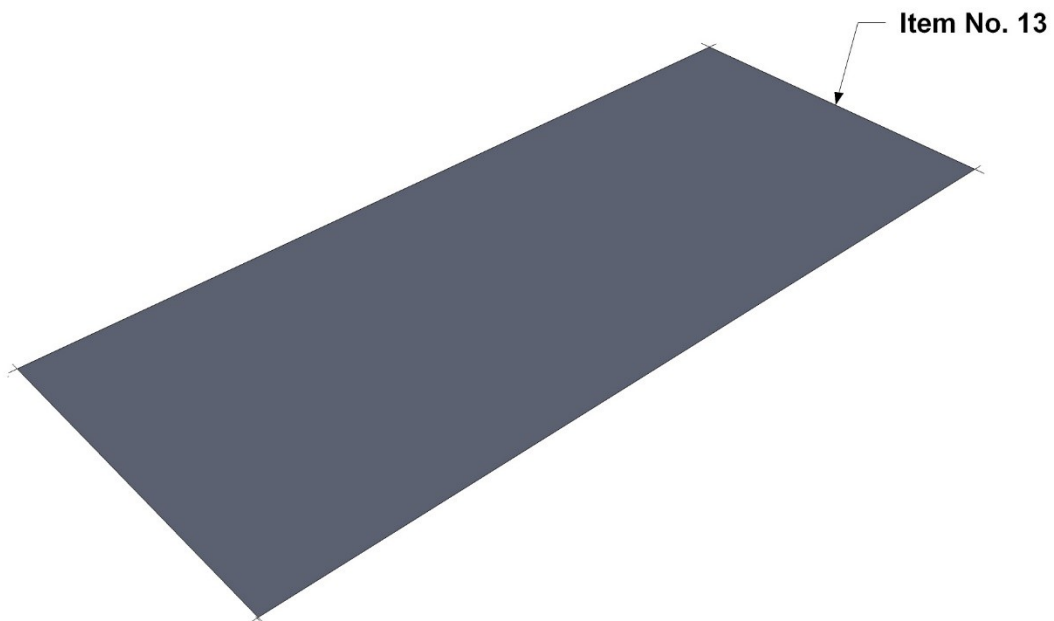
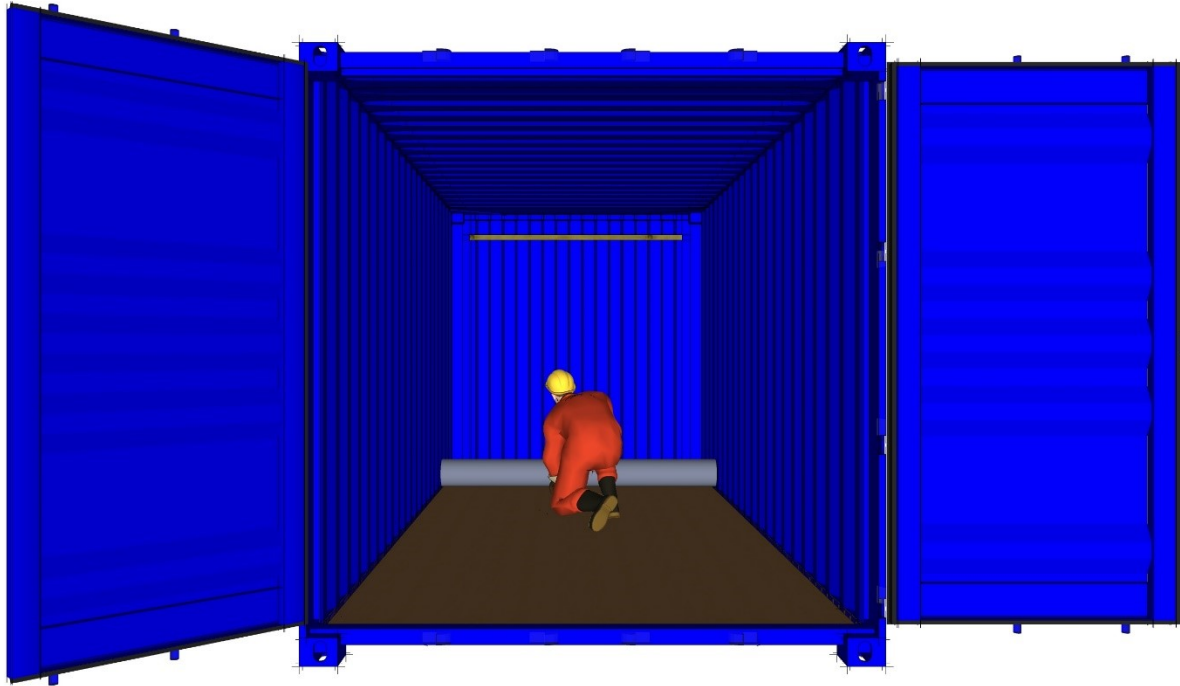
Item No. 3



STEP 2: Fix the Wood block (ITEM NO. 3) into the container as shown in photo above. It keeps the wall panels aligned to the Bottom U Profile.

DURATION OF WORK: 2 Minutes

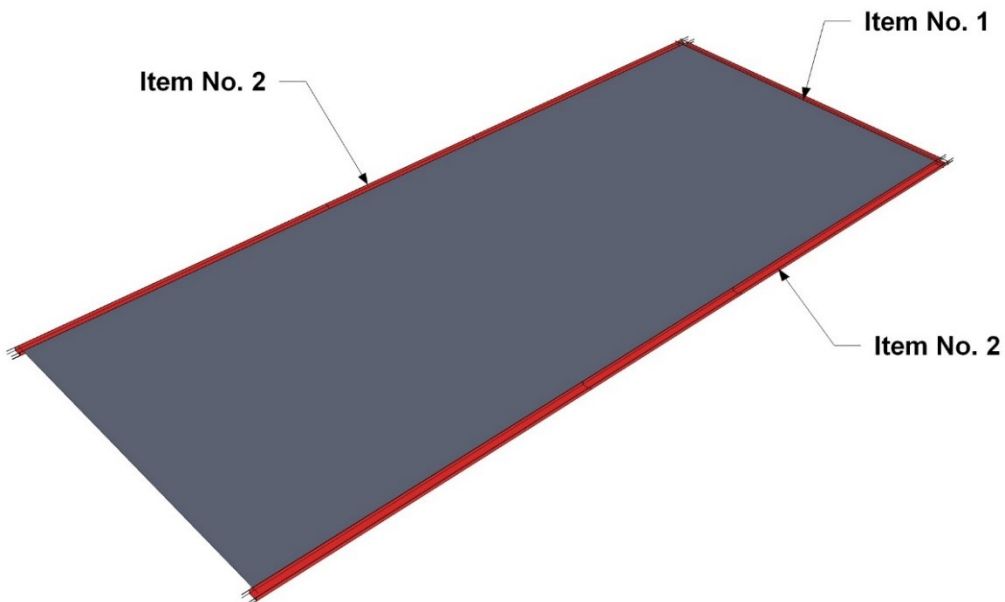
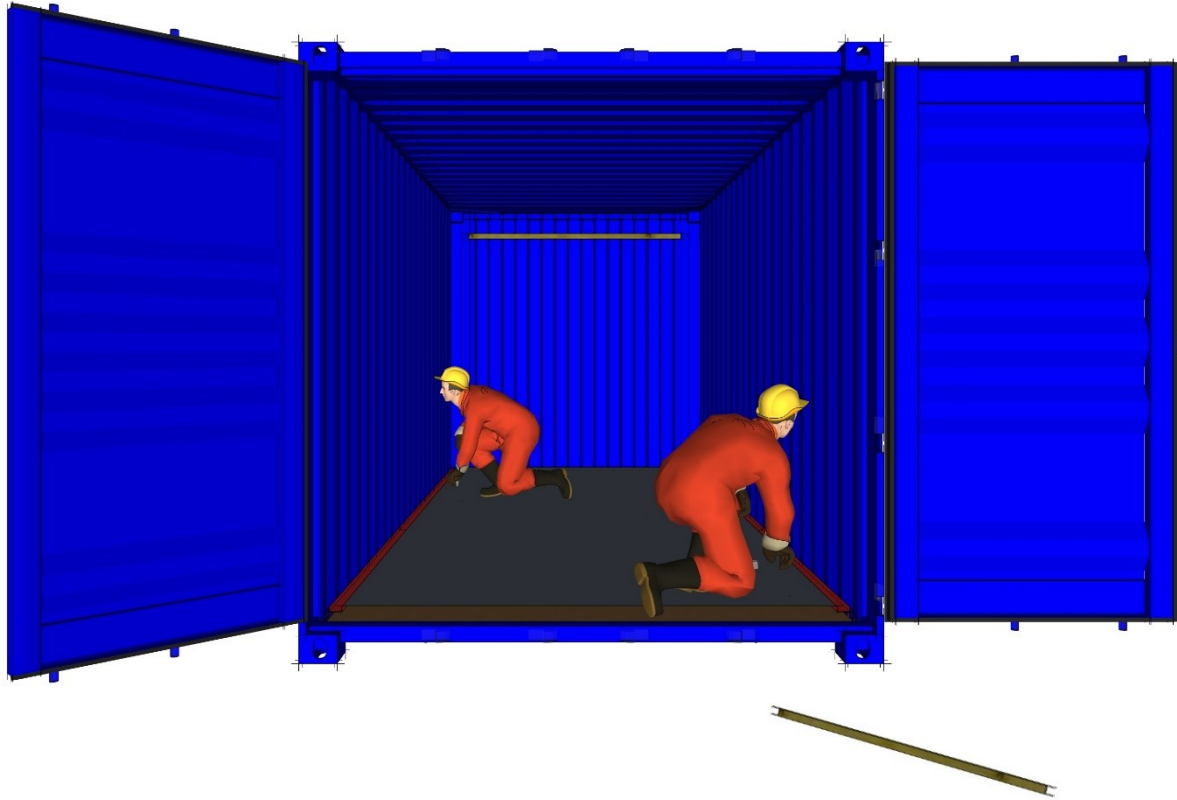
NO. OF WORKERS: 2 Workers



STEP 3: Fix the PVC vinyl floor (ITEM NO. 13) on the container floor. Glue not supplied.

DURATION OF WORKS: 10 Minutes

NO. OF WORKERS: 2 Workers

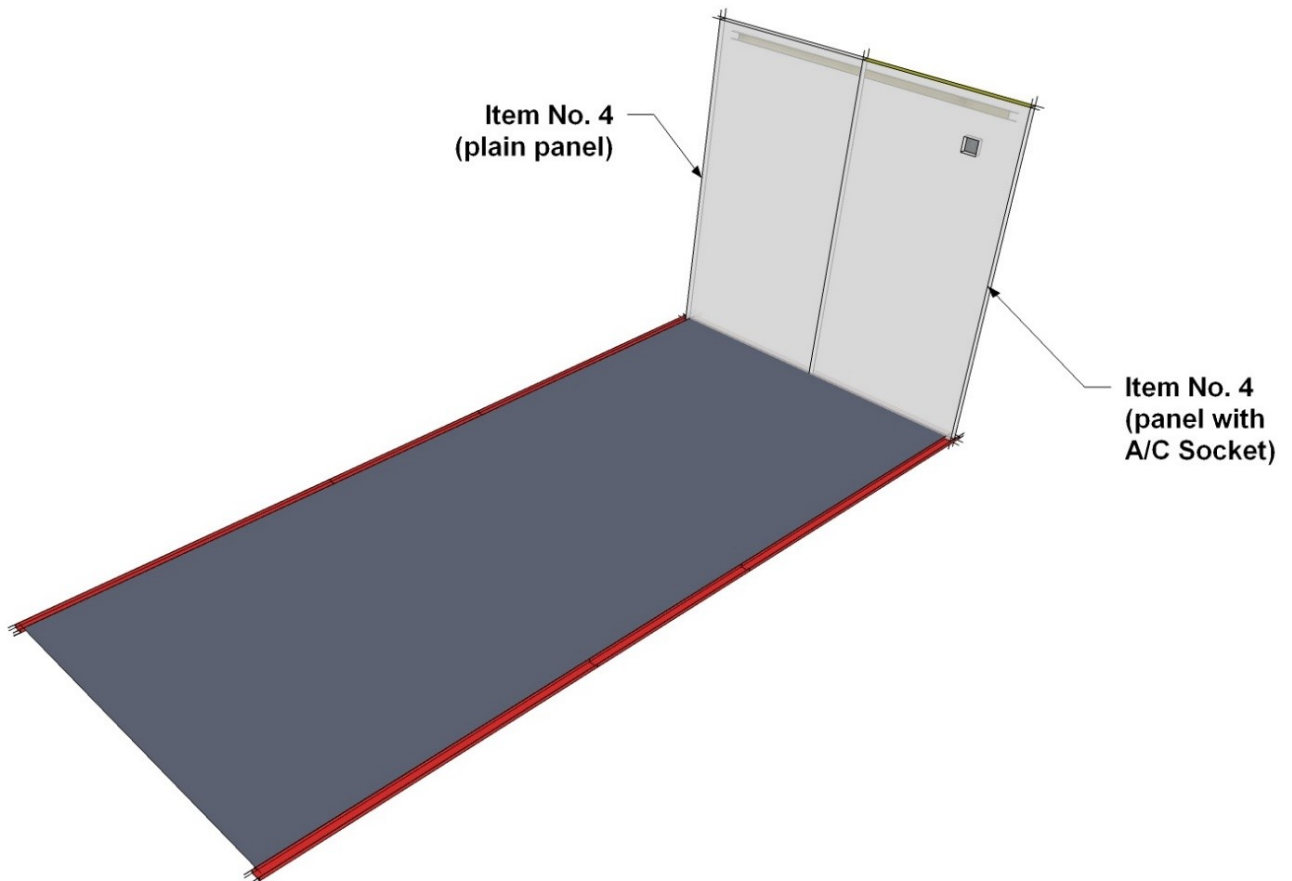
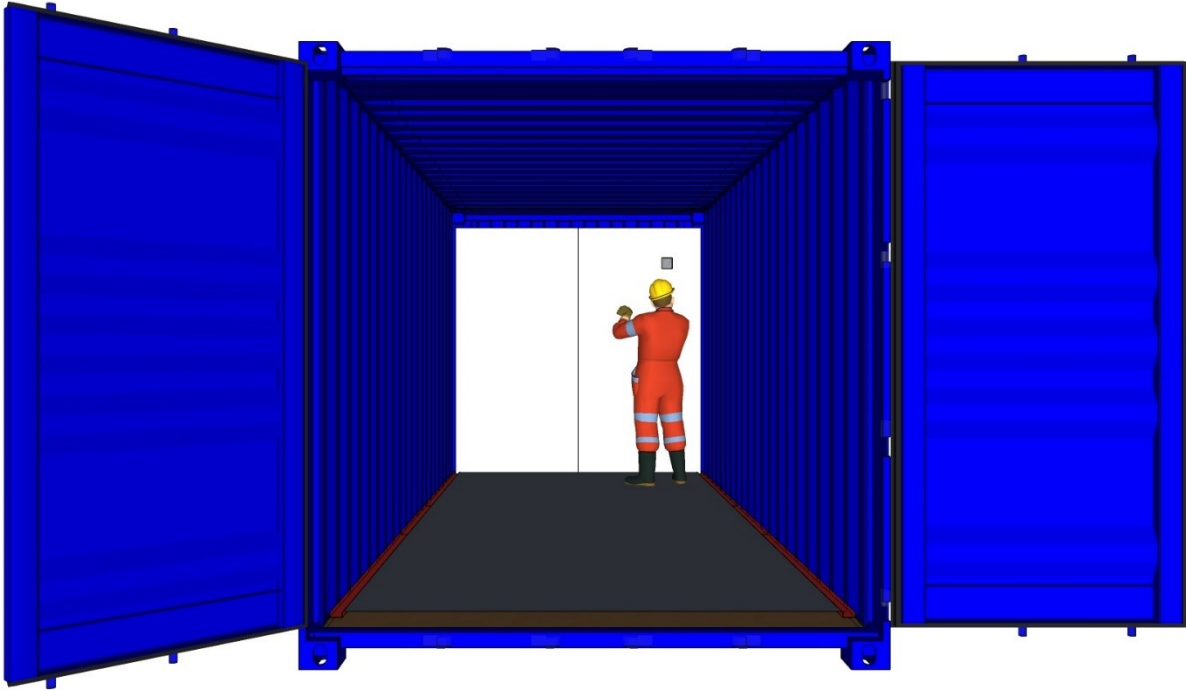


STEP 4: Fix the Bottom U Profile on the container floor in 2 long side (ITEM NO. 2) & 1 short side (ITEM NO. 1) (rear/back) on the container as shown in the photo above.

Use Screw - ST 4.2 x 32 = 50 pcs.

DURATION OF WORK: 10 Minutes

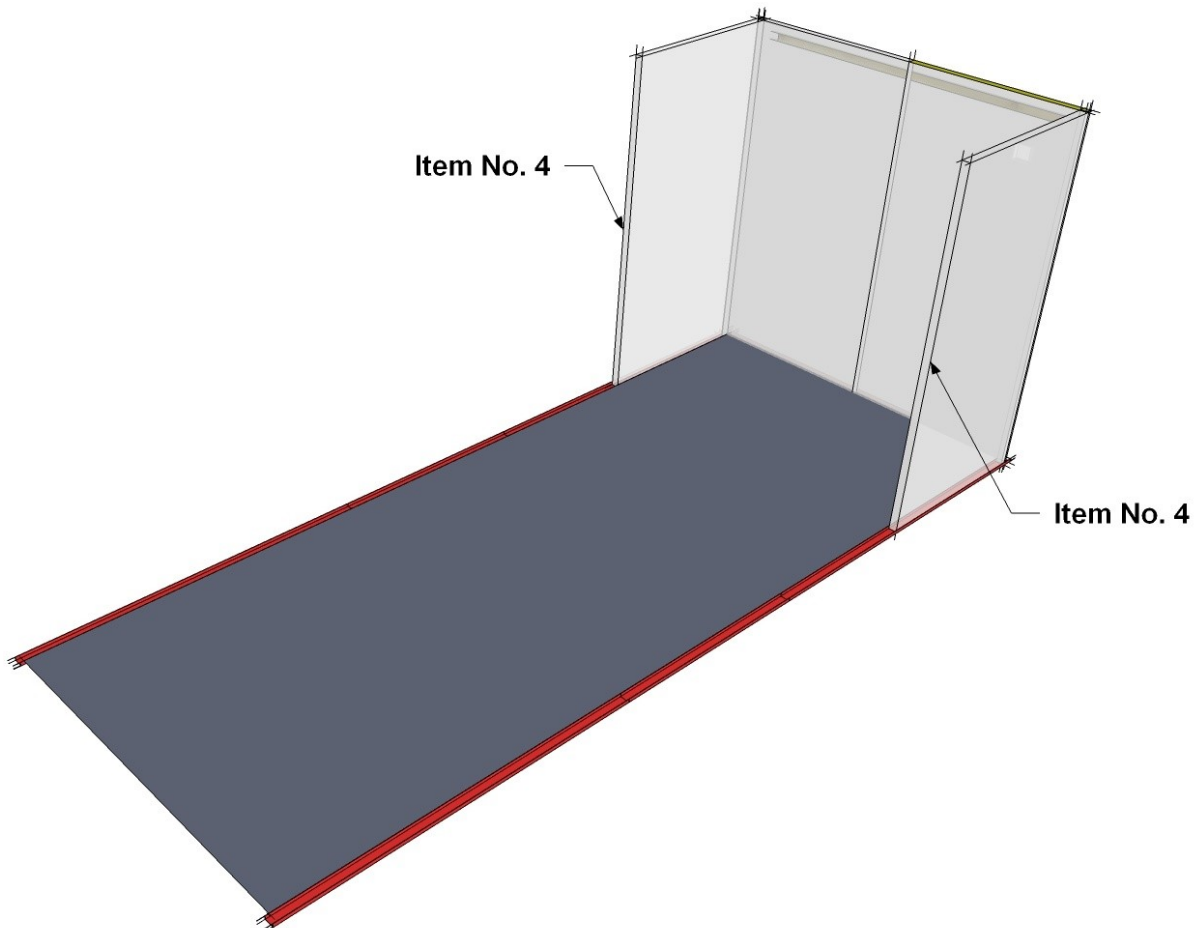
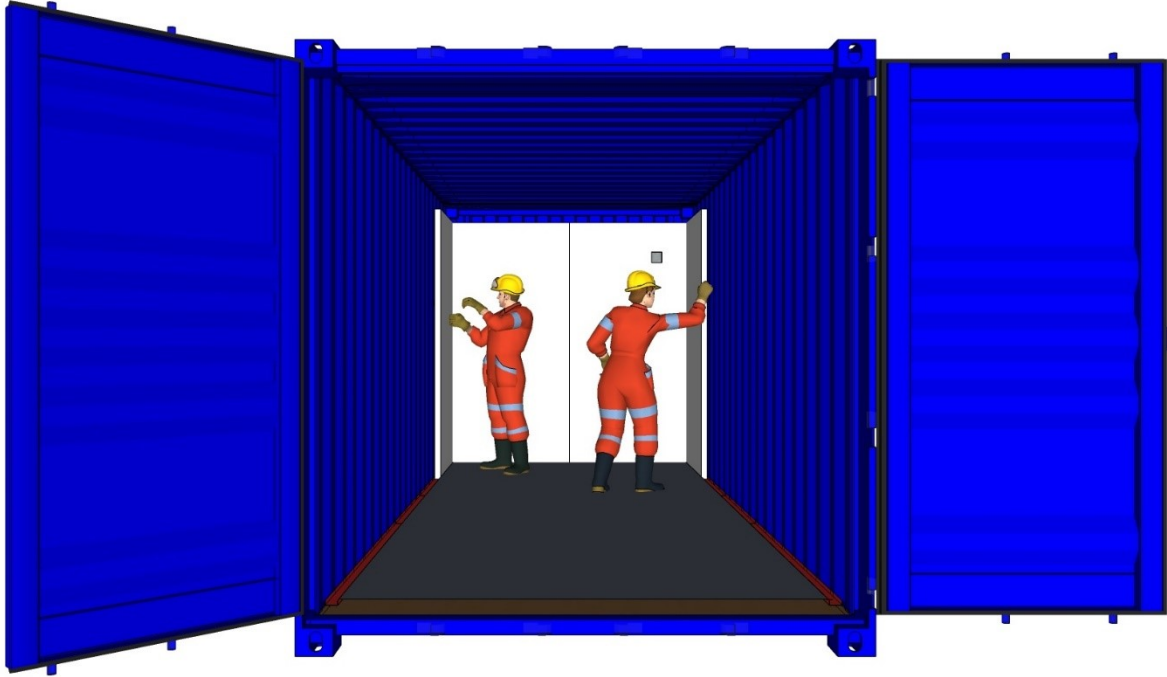
NO. OF WORKERS: 2 Workers



STEP 5: Install the first 2 wall panel (ITEM NO. 4) on short side as shown in the photo above. Note that 1 of the panel is with A/C socket.

DURATION OF WORK: 6 Minutes

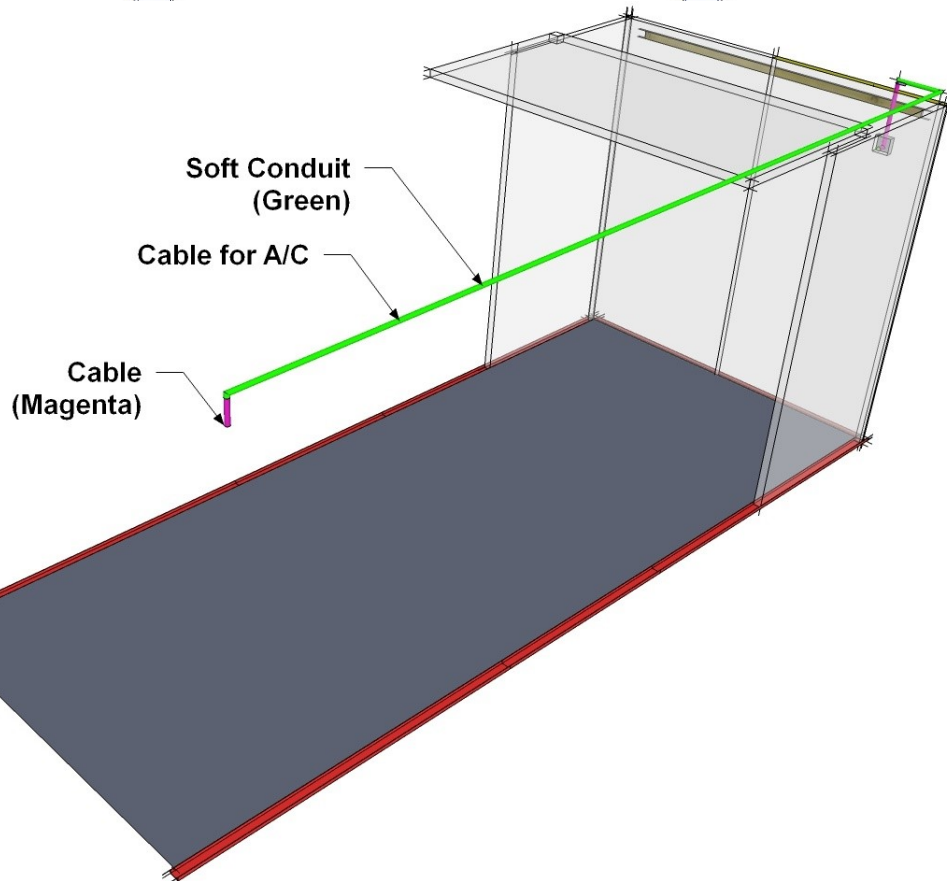
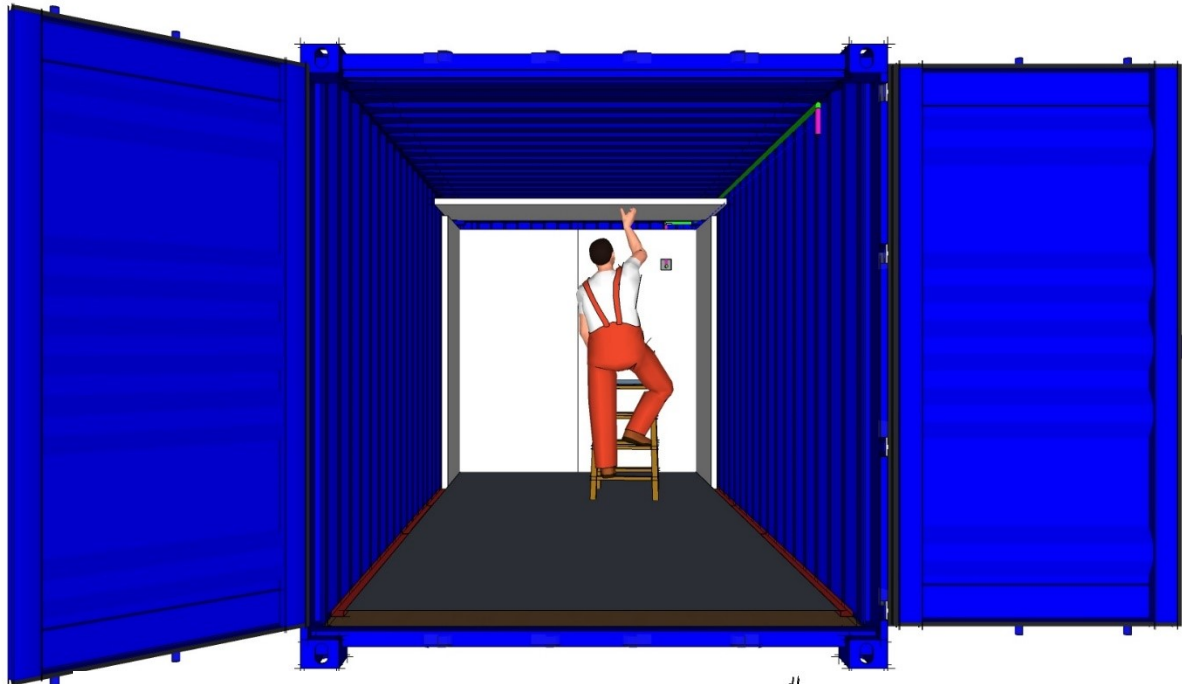
NO. OF WORKERS: 2 Workers



STEP 6: Proceed with the installation of 2 side panels as shown in the photo above.

DURATION OF WORK: 25 Minutes for STEPS 6 to 11

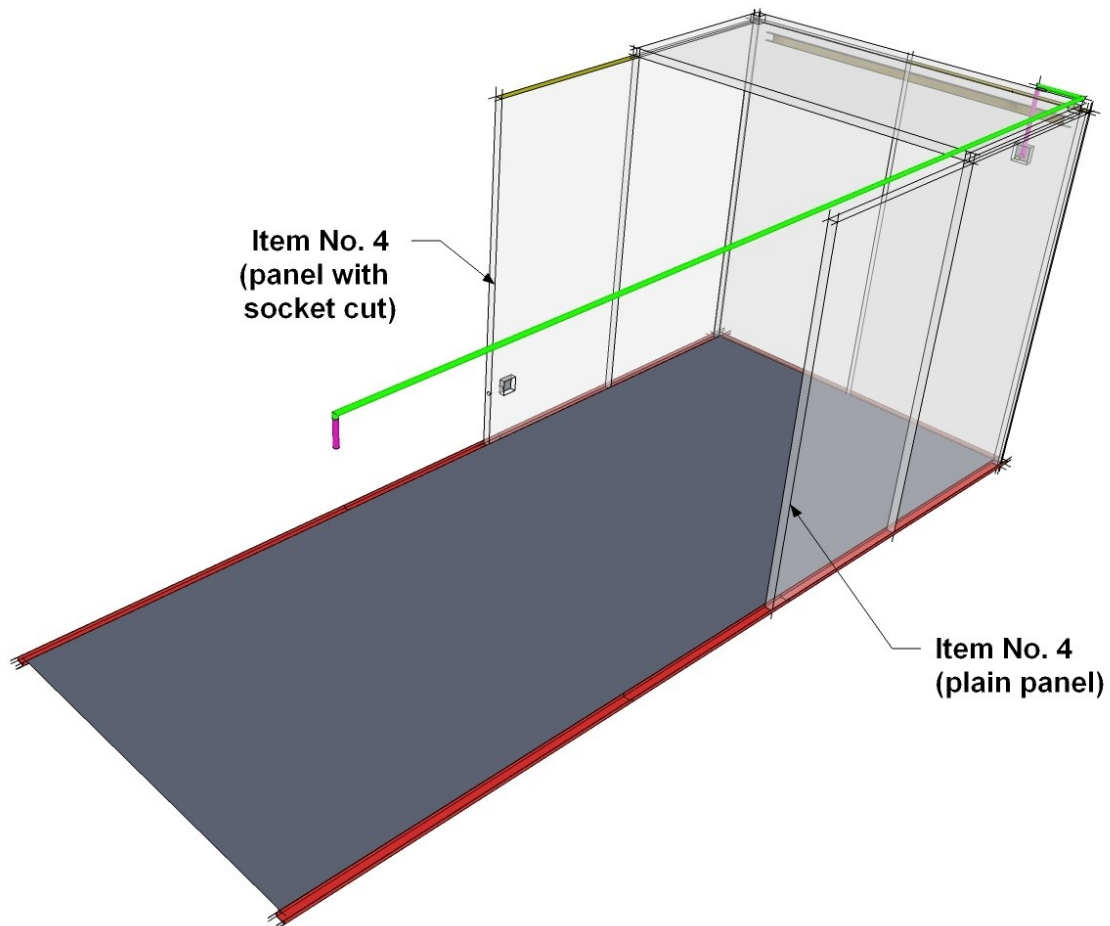
NO. OF WORKERS: 2 Workers



STEP 7: Once the first 2 side wall panels are installed, fix the first ceiling panel (ITEM NO. 5). Note that this (ceiling) panel have cut on 2 corners. This ceiling panel is only intended for this position. Leave a gap (between the ceiling panel and the short side wall), enough to insert and pull the cable. (for A/C Socket)

DURATION OF WORK: 25 Minutes for STEPS 6 to 11

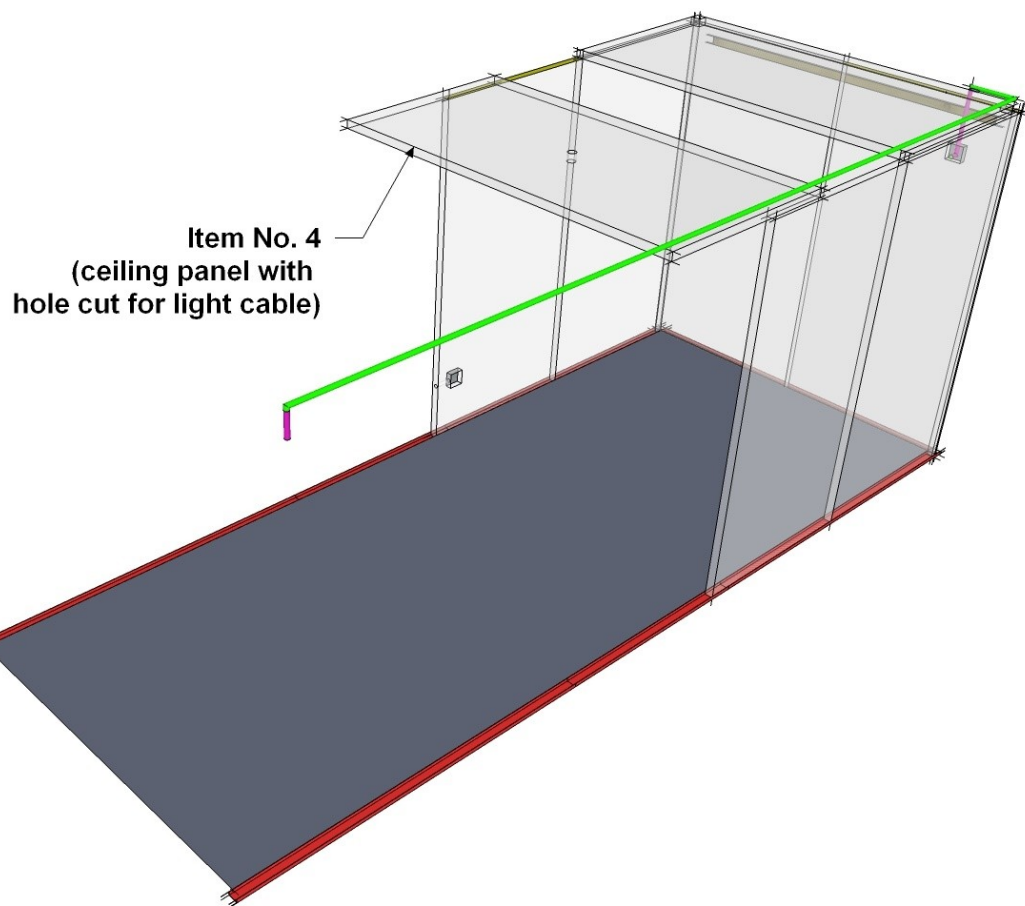
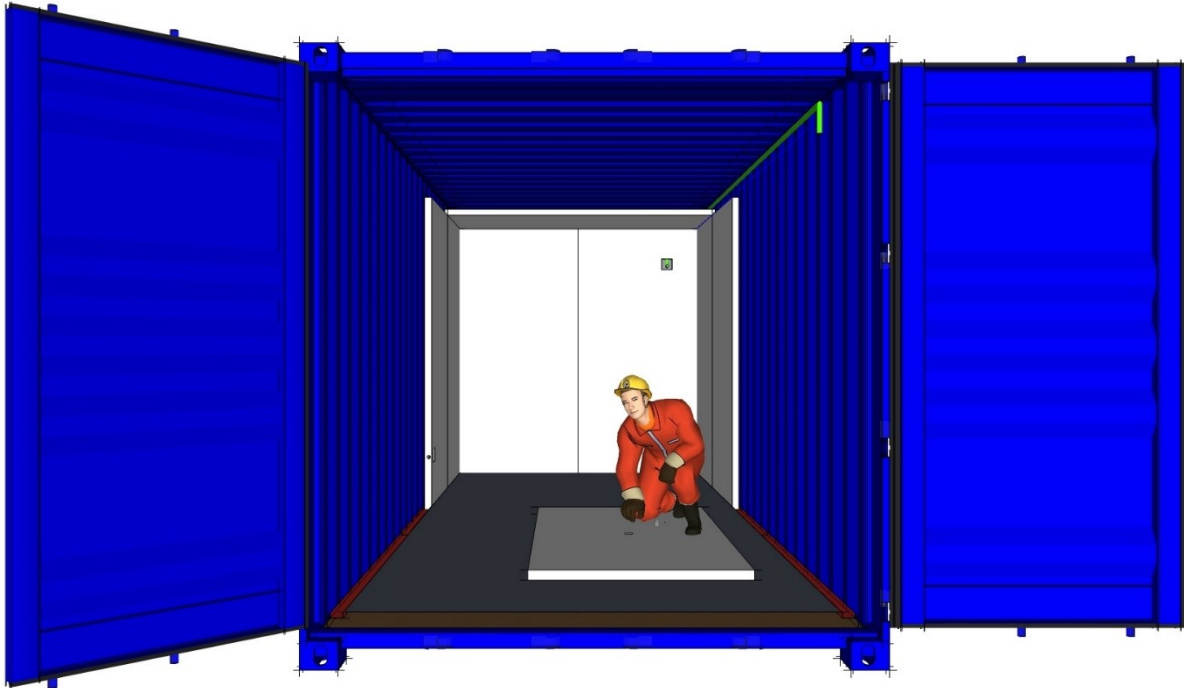
NO. OF WORKERS: 2 Workers



STEP 8: Repeat STEP 7. Reference to the final drawing, take note on the Panels with Sockets. There are cables to be inserted.

DURATION OF WORK: 25 Minutes for STEPS 6 to 11

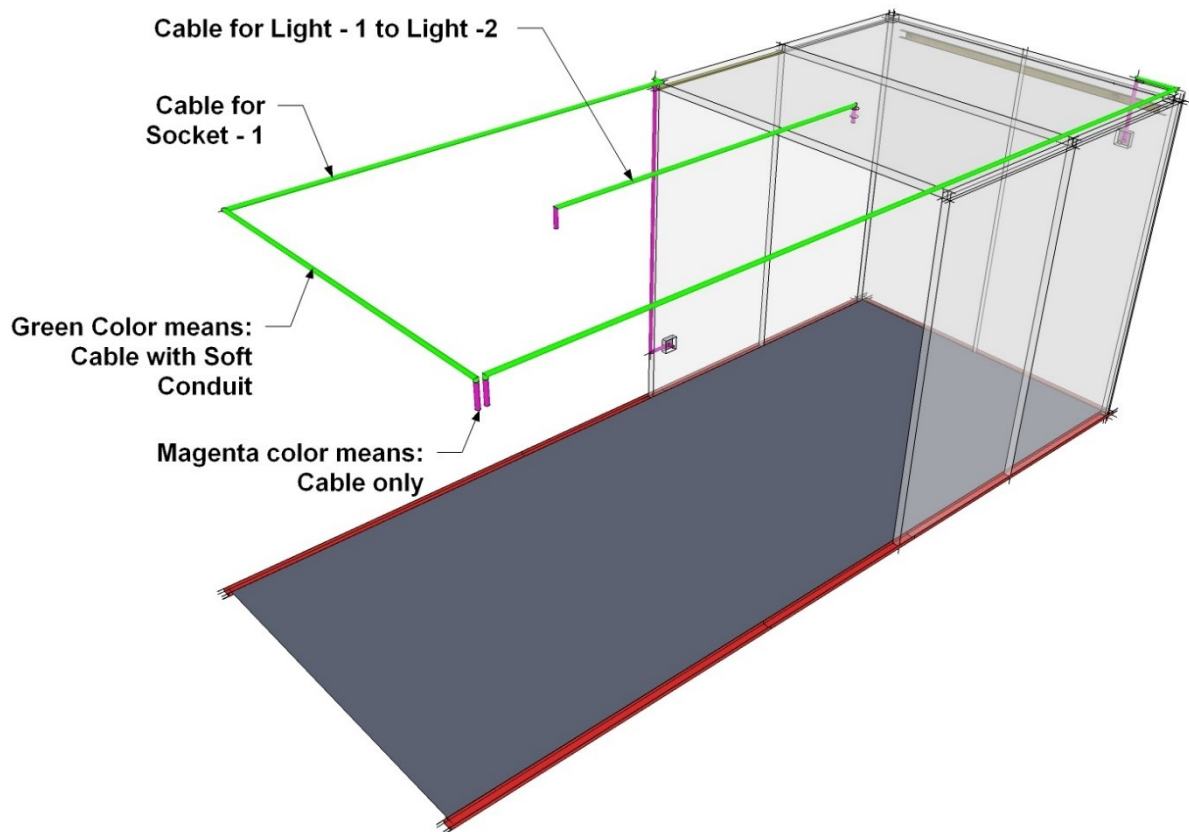
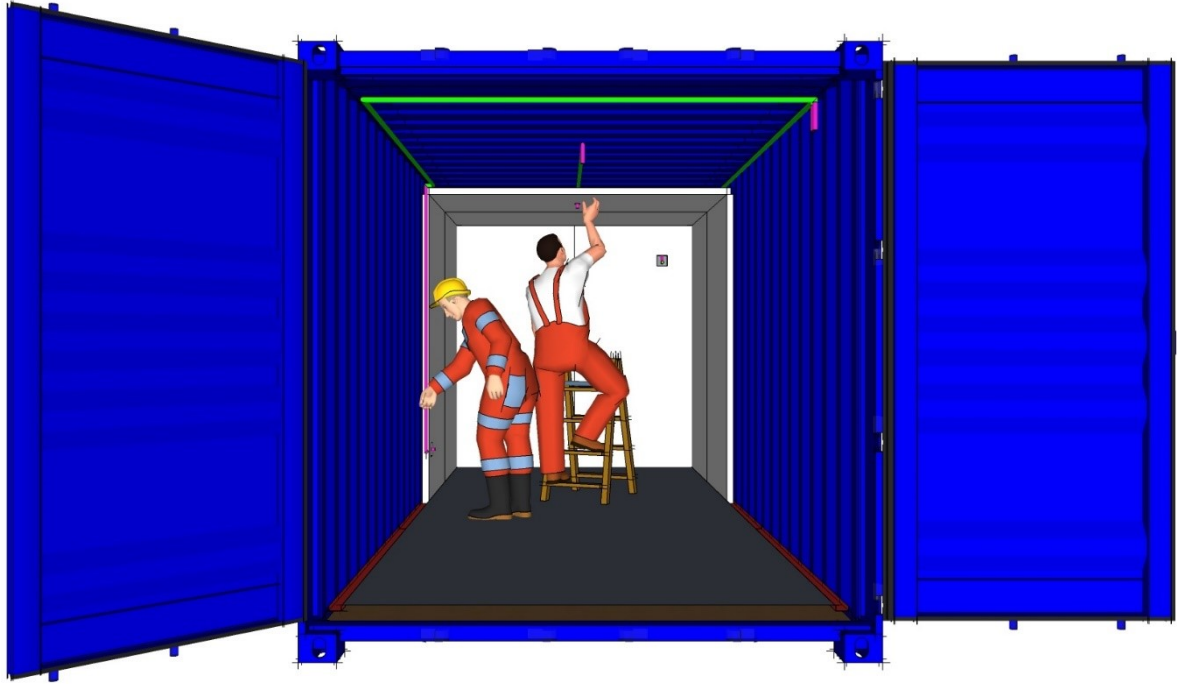
NO. OF WORKERS: 2 Workers



STEP 9: Before installing the 2nd ceiling panel, reference on the final drawing, measure and make a hole on the panel for light cable as shown in the photo above.

DURATION OF WORK: 25 Minutes for STEPS 6 to 11

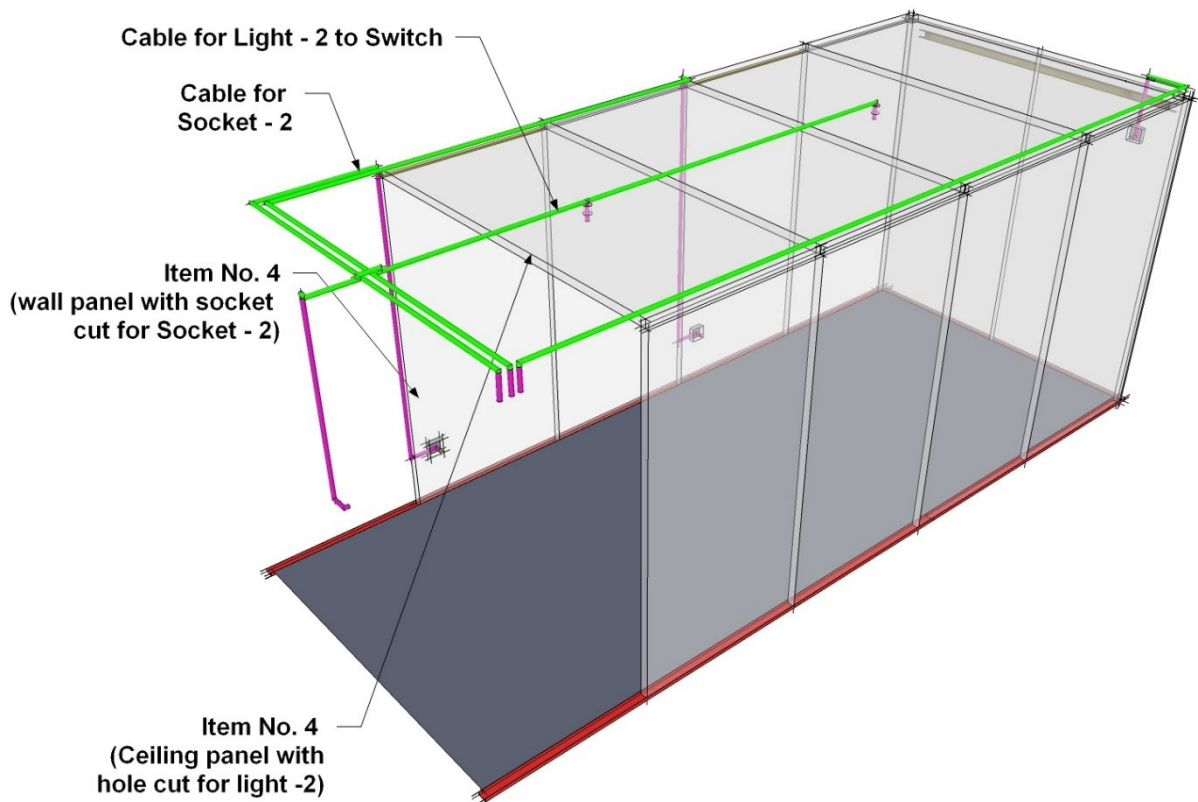
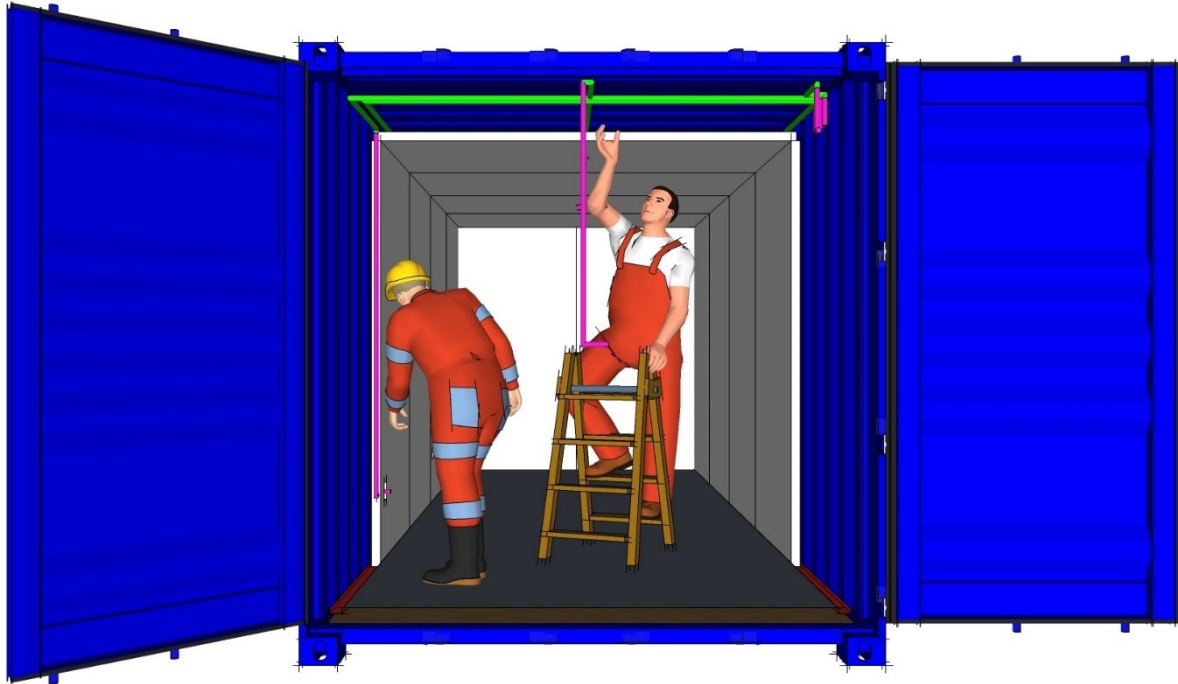
NO. OF WORKERS: 2 Workers



STEP 10: Before proceeding to the next ceiling and wall panels, insert the cables for light - 1 (just on top of the panel) and socket - 1 (in between the panel). Cable lengths should reach up to DB as shown in the photo above.

DURATION OF WORK: 25 Minutes for STEPS 6 to 11

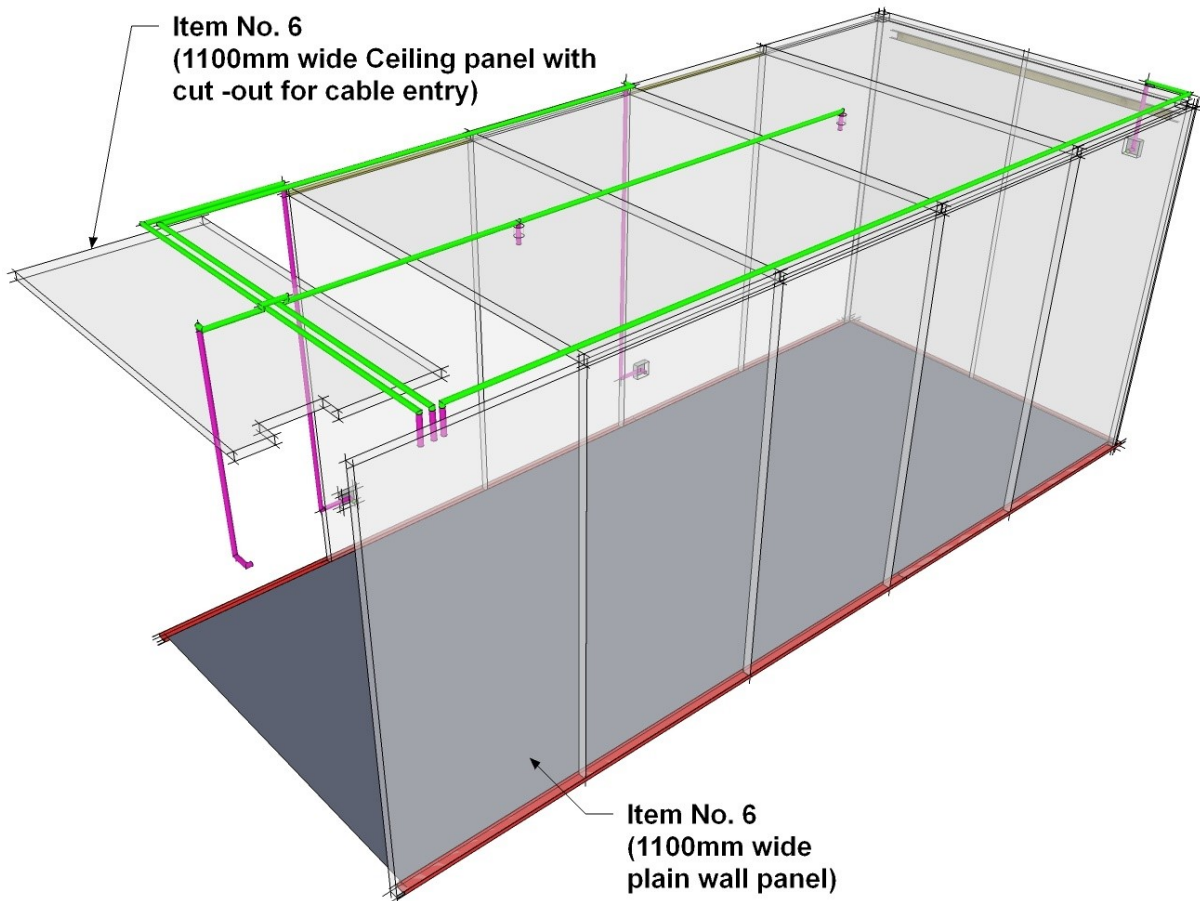
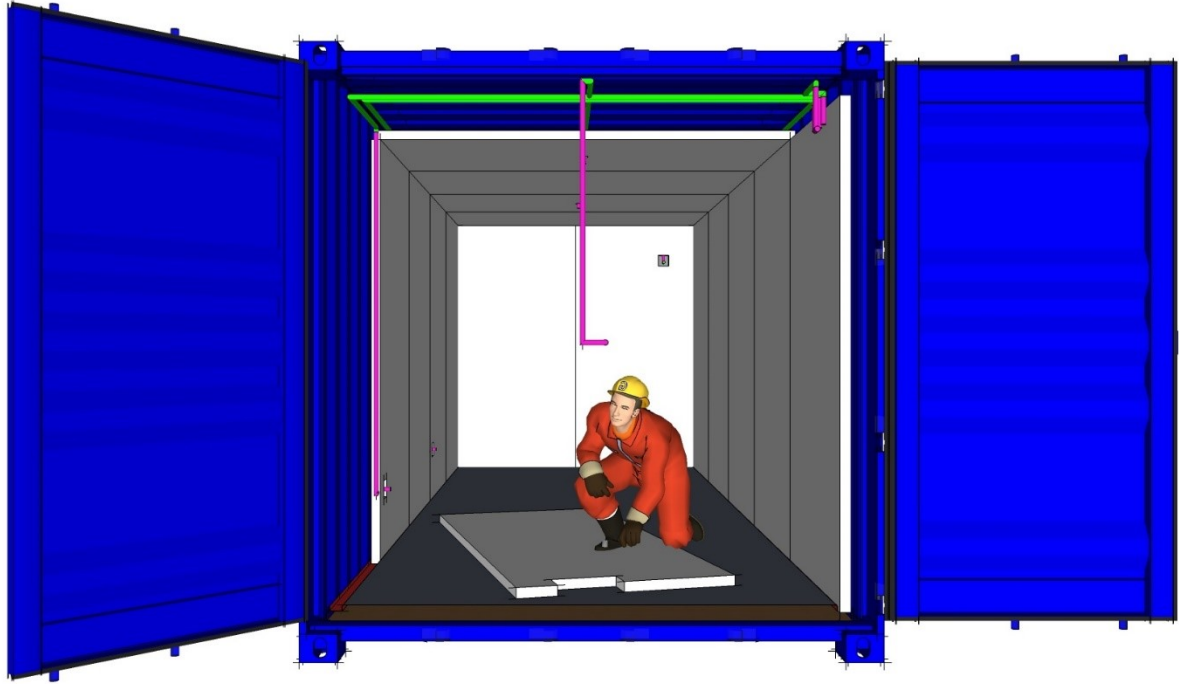
NO. OF WORKERS: 2 Workers



STEP 11: Repeat **STEP 10**. (Insert the cables for light and socket as shown in the photo above).

DURATION OF WORK: 25 Minutes for **STEPS 6 to 11**

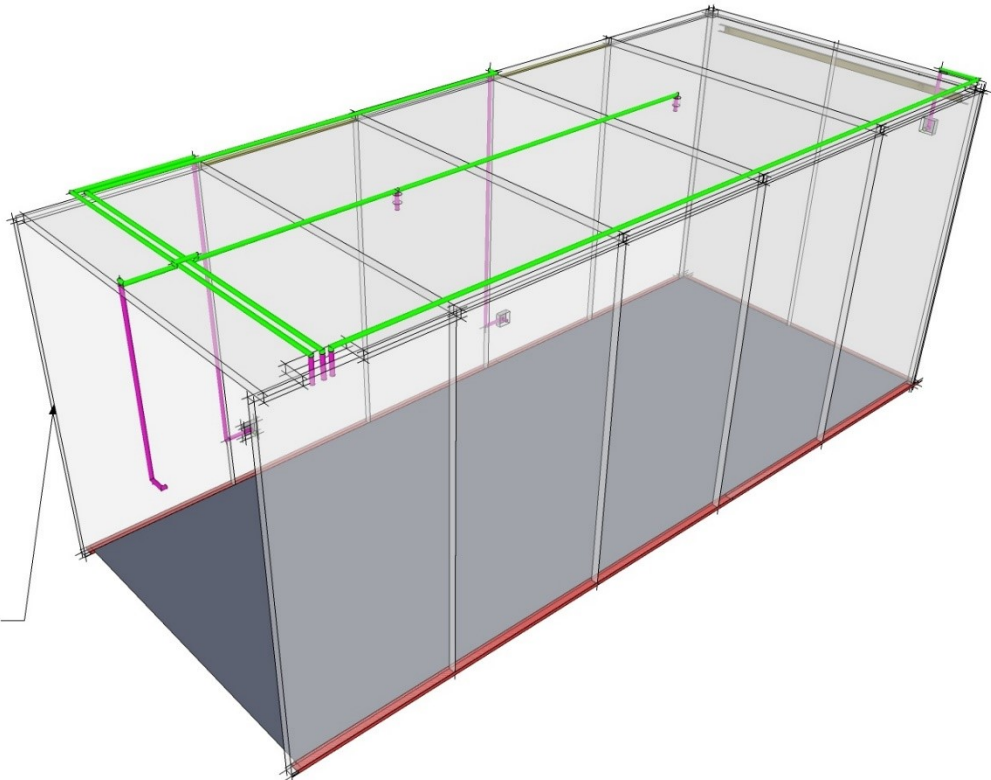
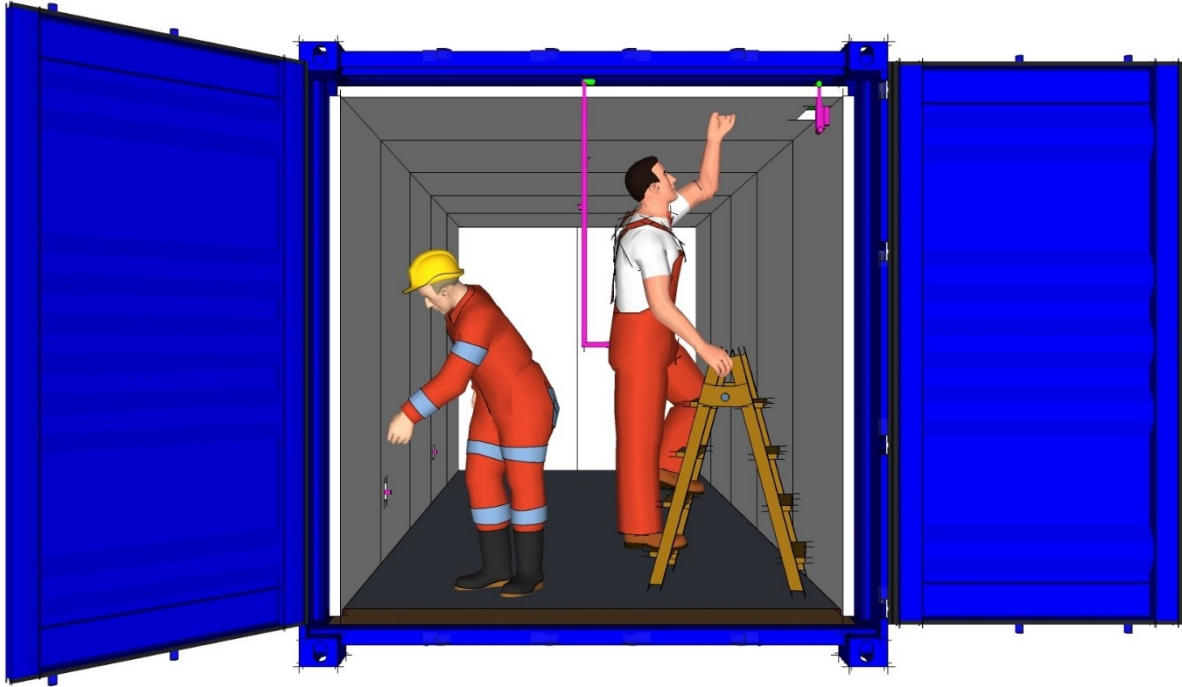
NO. OF WORKERS: 2 Workers



STEP 12: Note that, the fifth wall and ceiling panels (ITEM NO. 6) are narrower compared to other panels (1100mm wide). These panels are specifically intended on 'this' position. Note that the ceiling panel must cut for cable entry as per photo shown above.

DURATION OF WORK: 6 Minutes for STEPS 12 to 13

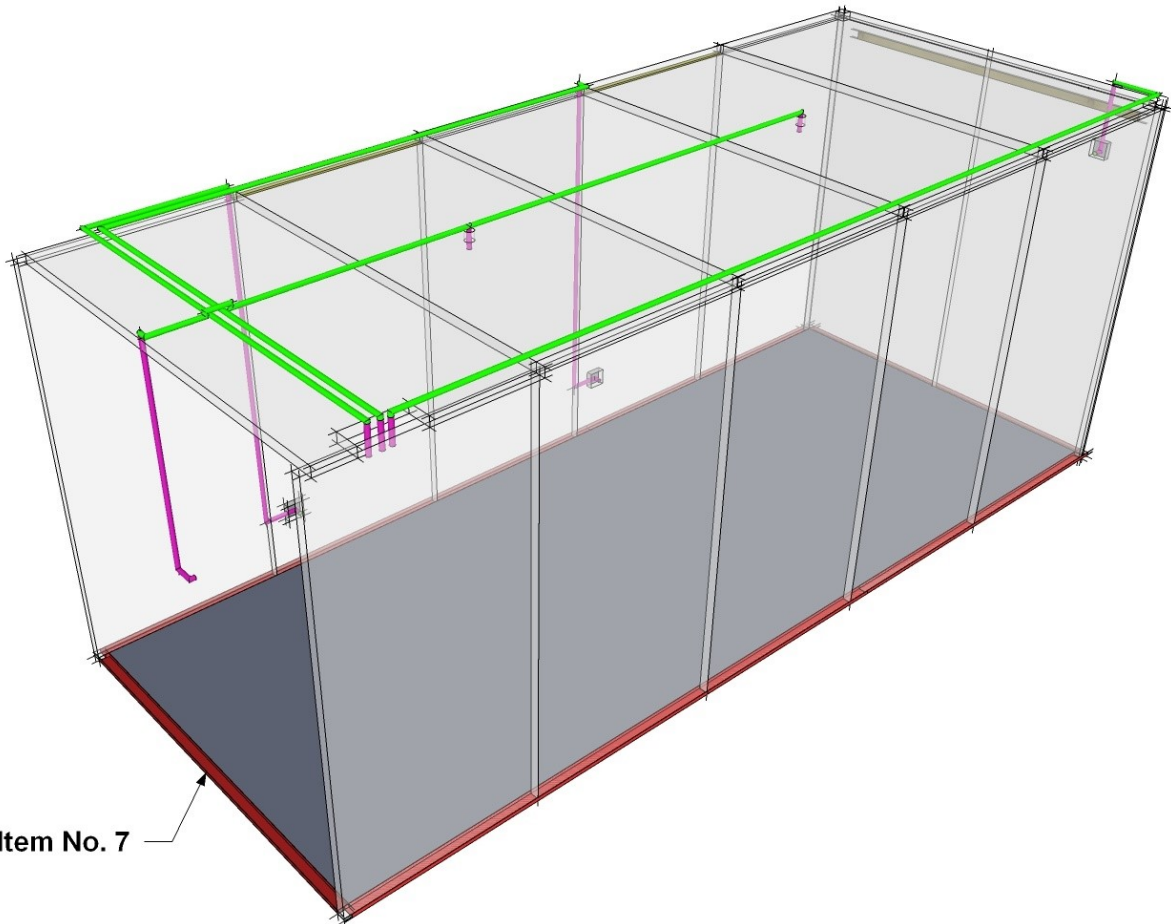
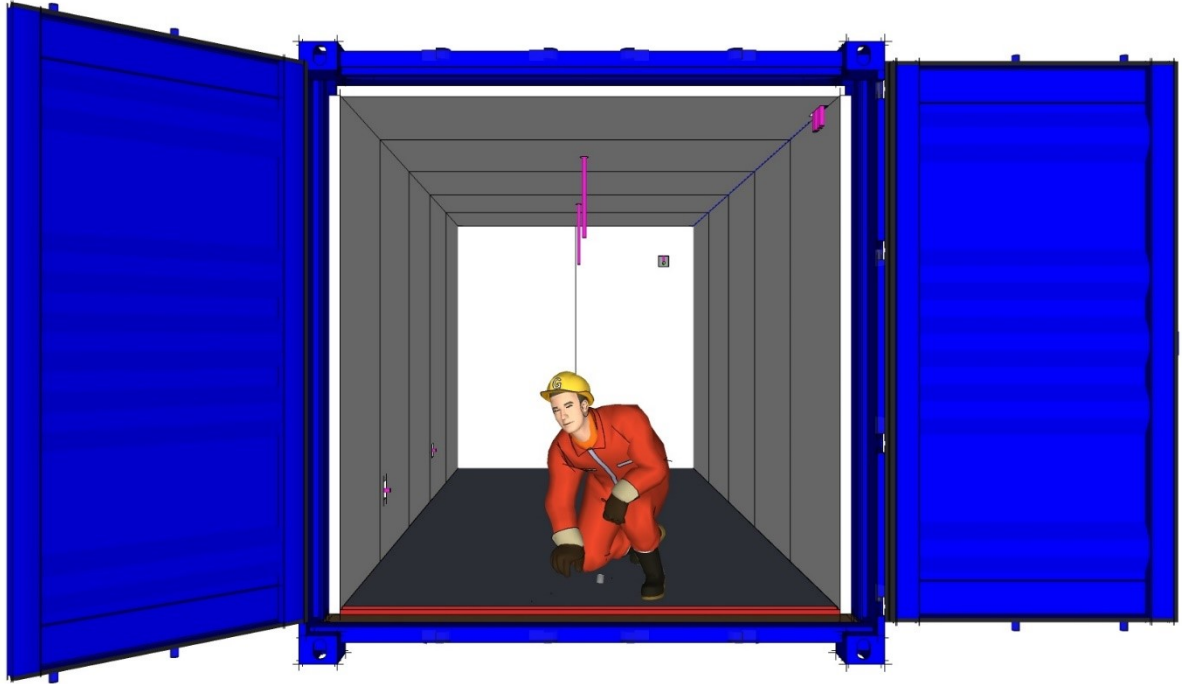
NO. OF WORKERS: 2 Workers



STEP 13: Fix the Ceiling panel –with cut (ITEM NO. 6) in place then proceed immediately with the installation of Wall panel (ITEM NO. 6) as shown in photo above.

DURATION OF WORK: 6 Minutes for STEPS 12 to 13

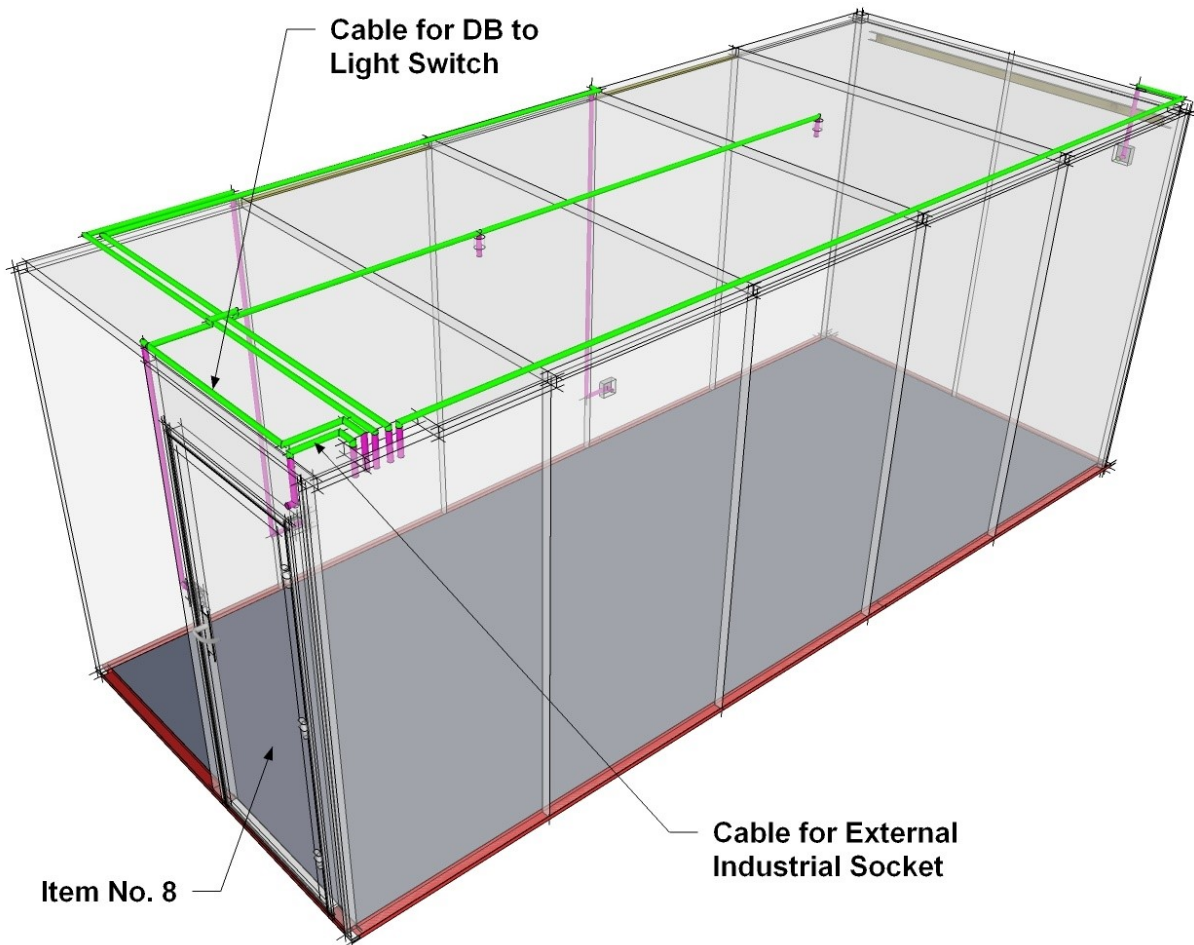
NO. OF WORKERS: 2 Workers



STEP 14: Fix the remaining Bottom U Profile (ITEM NO. 7) as shown in the photo above.

DURATION OF WORK: 2 Minutes

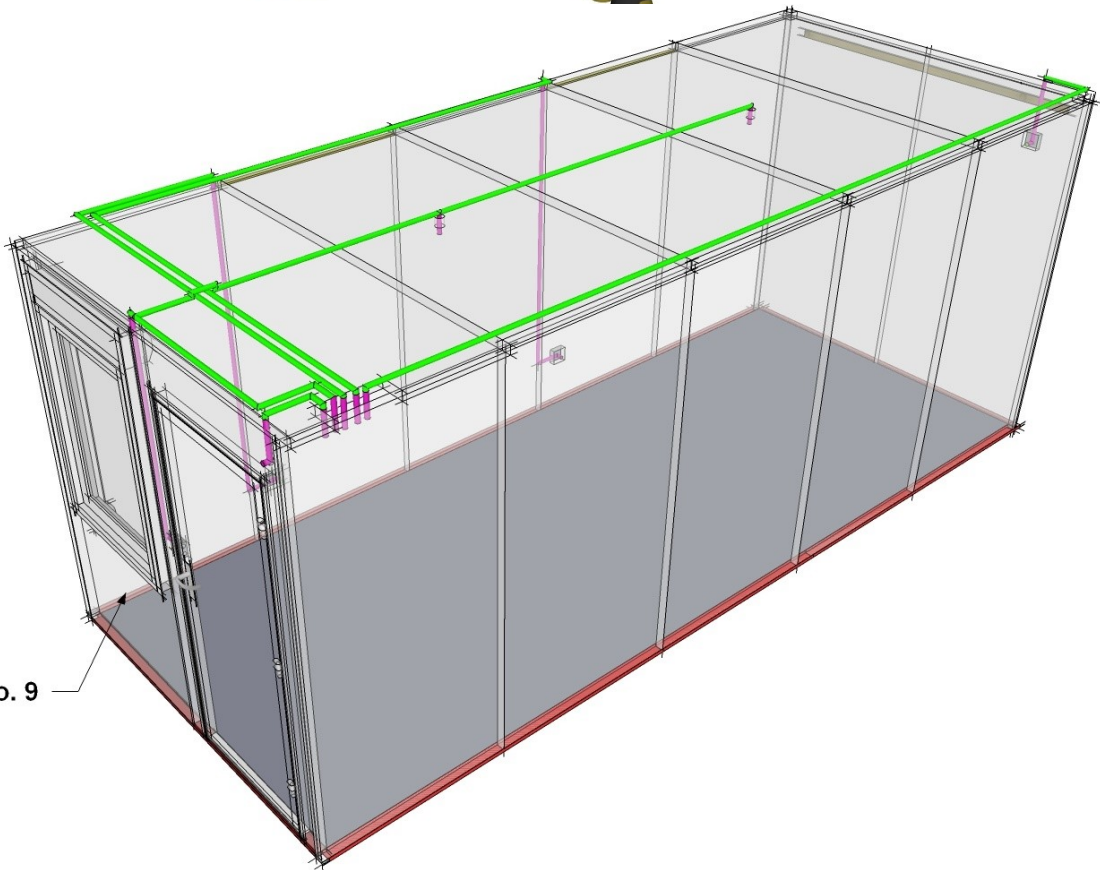
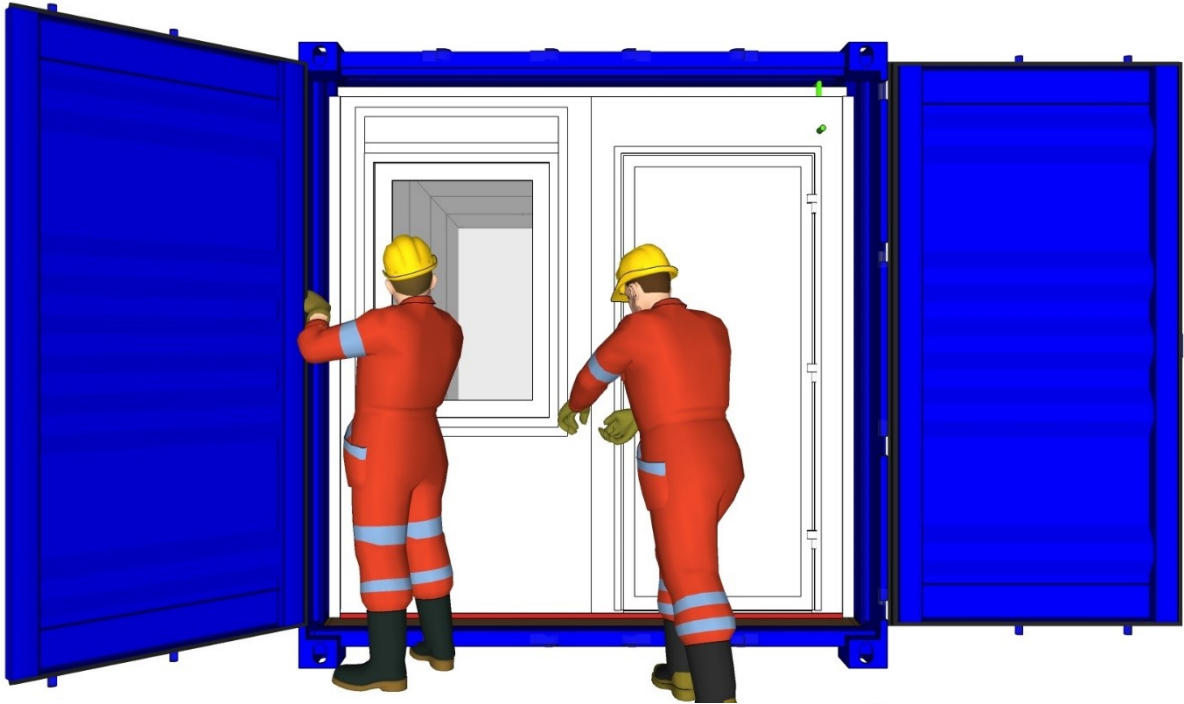
NO. OF WORKERS: 2 Workers



STEP 15: Fix the wall panel with door (ITEM NO. 8) as shown in photo above. Insert the cable for Main External socket and for lighting fixtures switch.

DURATION OF WORKS: 8 Minutes for STEPS 15 to 16

NO. OF WORKERS: 2 Workers

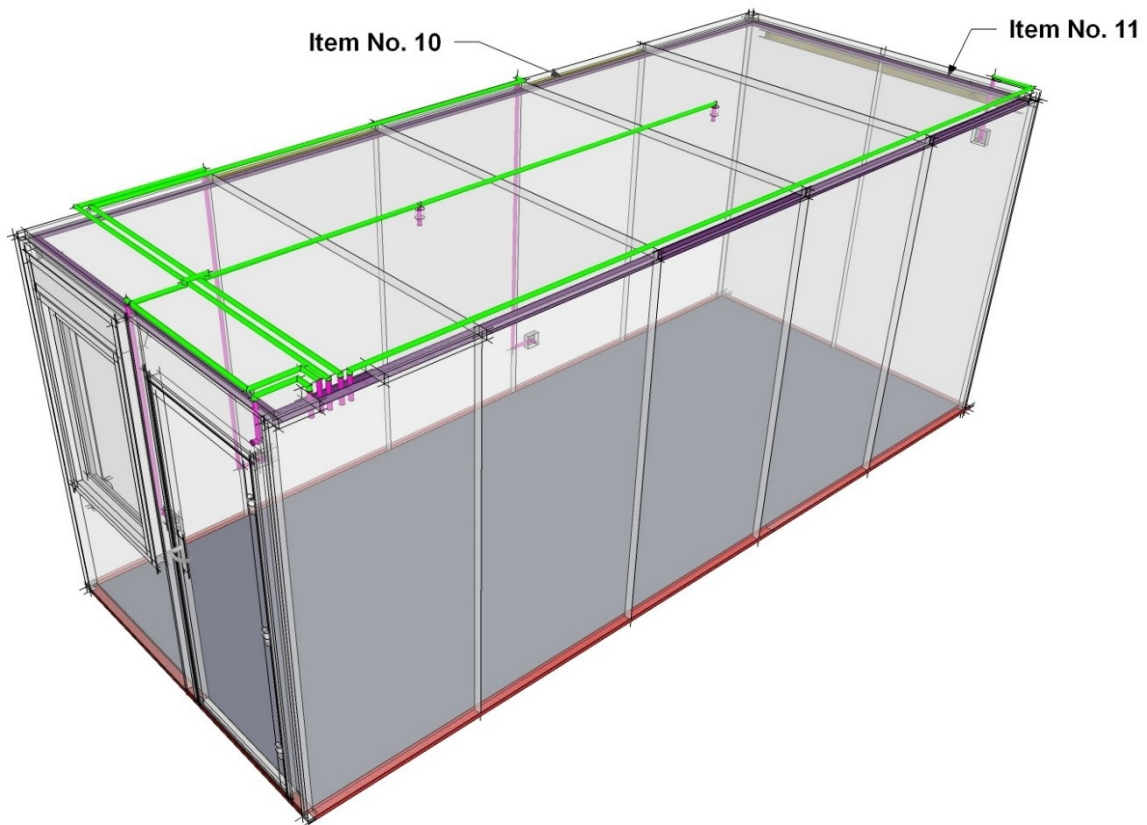


Item No. 9

STEP 16: Fix the wall panel with window (ITEM NO. 9) as shown in photo above.

DURATION OF WORKS: 8 Minutes for STEPS 15 to 16

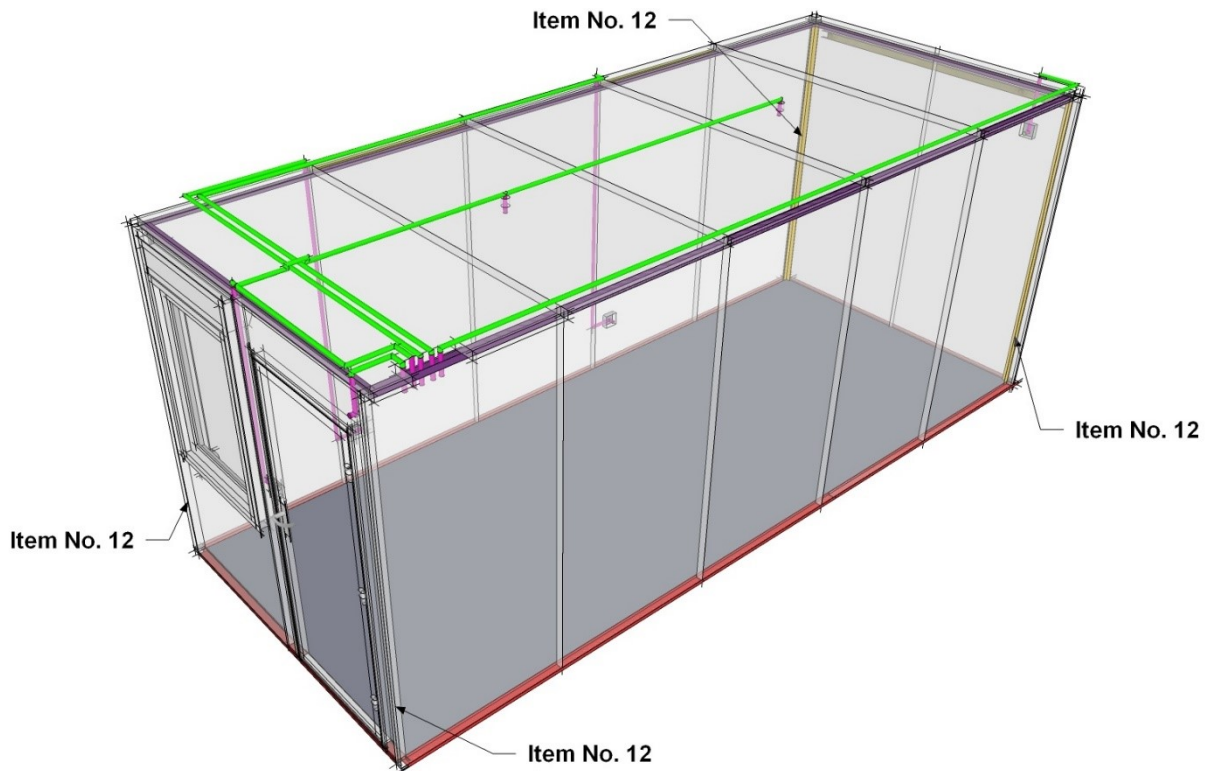
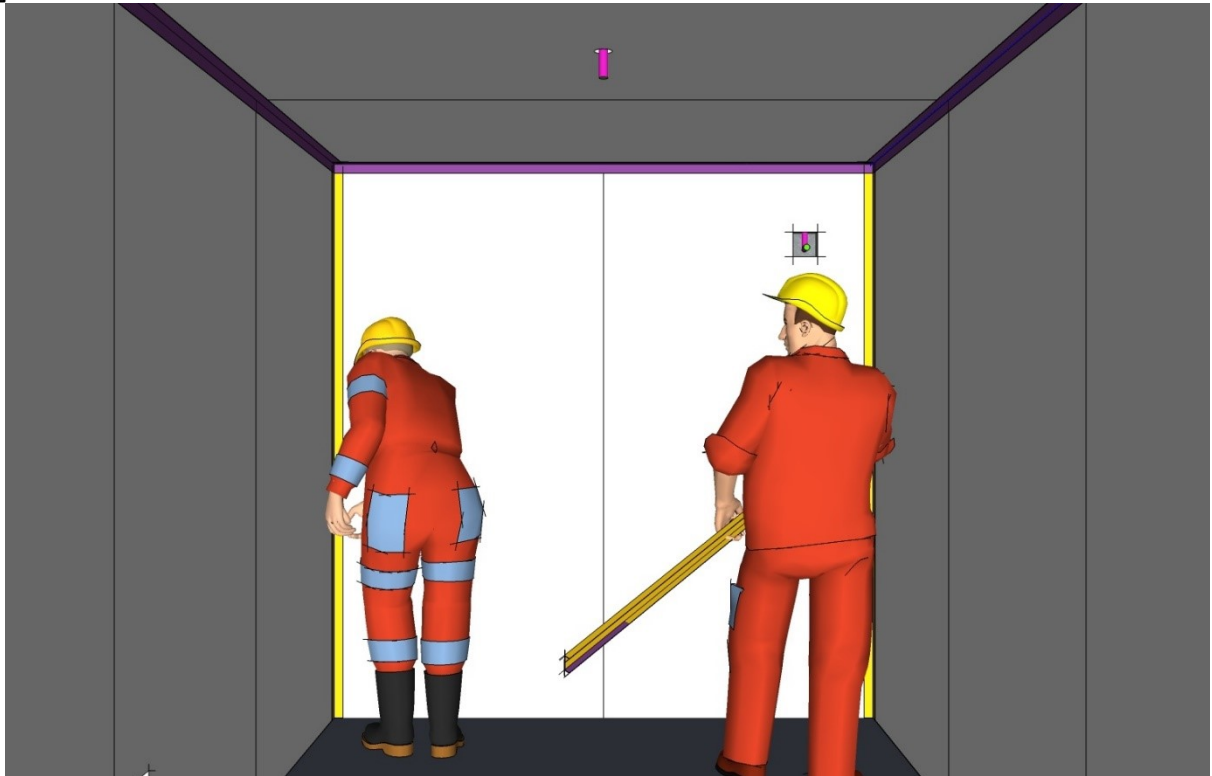
NO. OF WORKERS: 2 Workers



STEP 17: After all panels are installed, fix the 4 ceiling flashings/trims (ITEM NO. 10 – flashing on long sides and ITEM NO. 11 – flashings on short sides) as shown in the photo above. Note that flashing where DB is location must be cut same as width of ceiling panel. Use Screw ST 4.2 x 19

DURATION OF WORKS: 25 Minutes for STEPS 17 to 18

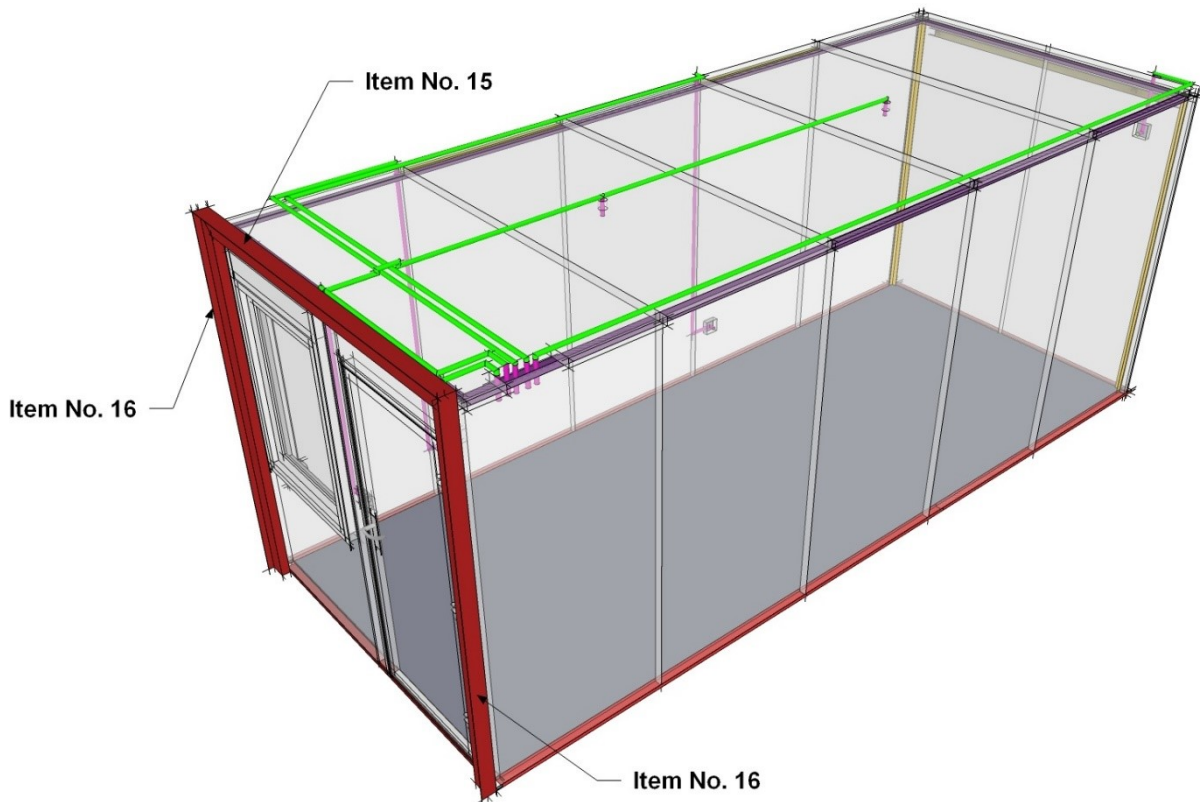
NO. OF WORKERS: 2 Workers



STEP 18: Fix the 4 Corner flashings/trims (ITEM NO. 12) as shown in the photo above. Use Screw ST 4.2 x 19

DURATION OF WORKS: 25 Minutes for STEPS 17 to 18

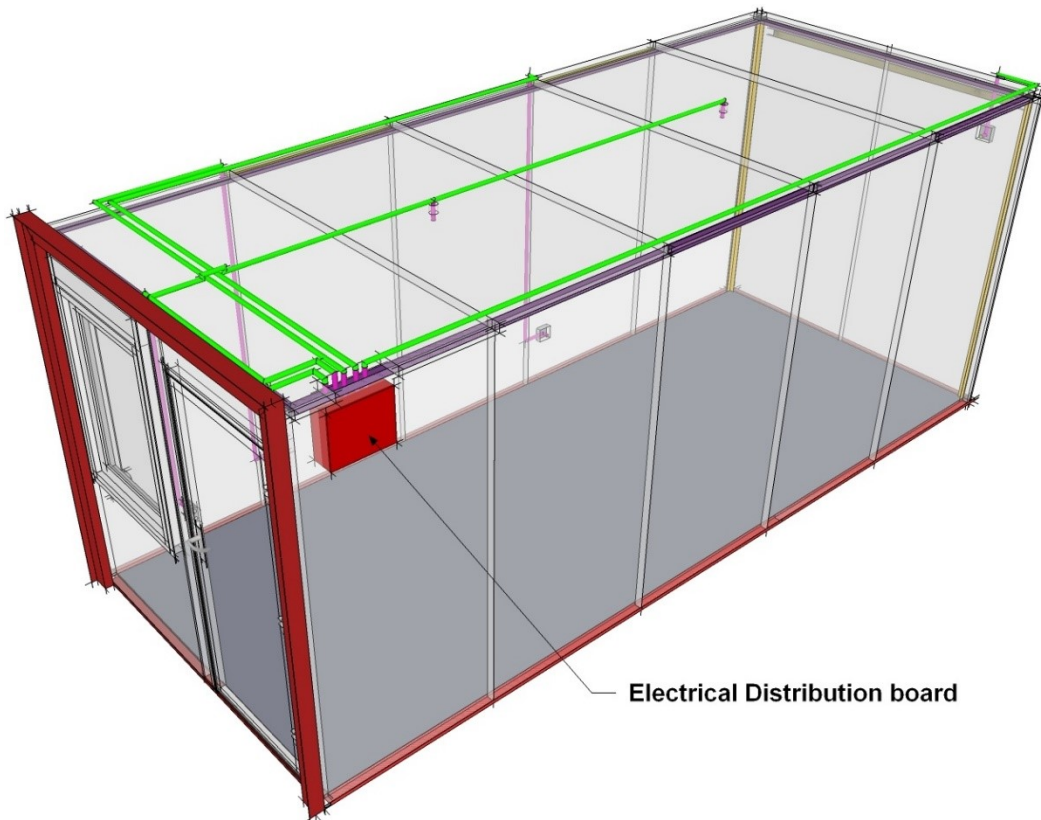
NO. OF WORKERS: 2 Workers



STEP 19: Fix the 'external' trims on the doorway (ITEM NO. 15 – top trim; ITEM NO. 16 – side trims) as shown on the photo above.

DURATION OF WORK: 10 Minutes

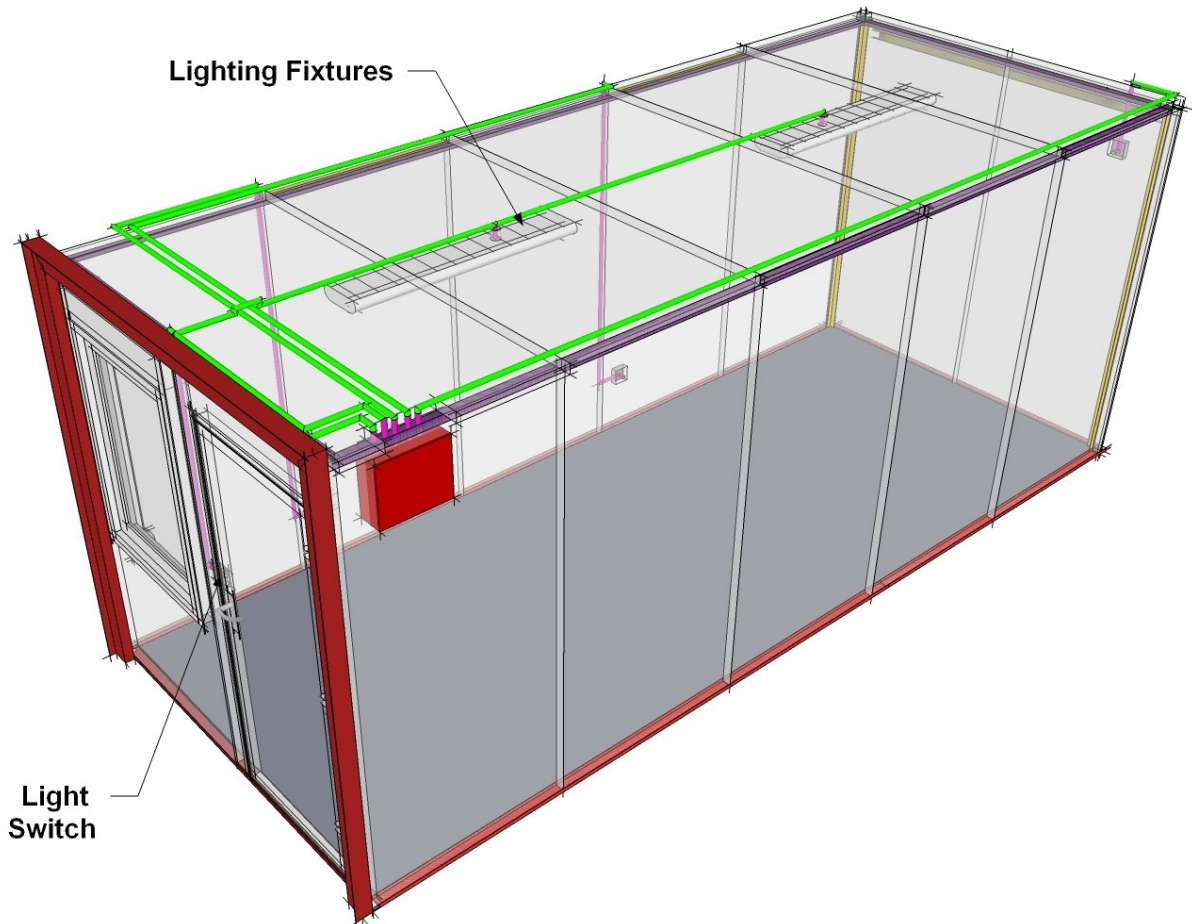
NO. OF WORKERS: 2 Workers



STEP 20: After all flashings and trims are installed, fix the Electrical DB and the rest of electrical accessories and fittings.

DURATION OF WORKS: 30 Minutes for STEPS 20 to 25

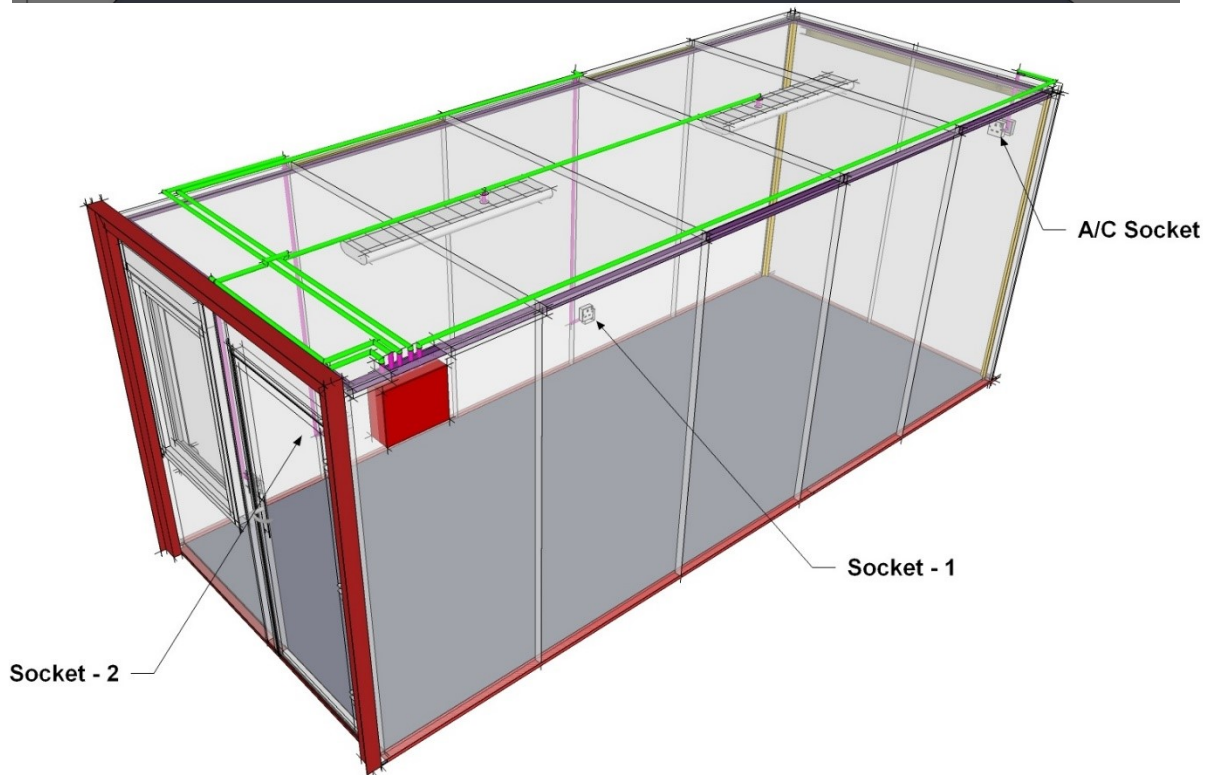
NO. OF WORKERS: 2 Workers



STEP 24A: Fix in position all electrical fittings such as lights and switches. Connect wires/cables on each electrical fittings. All electrical works must be done or supervised by qualified electrical personnel.

DURATION OF WORKS: 30 Minutes for STEPS 20 to 25

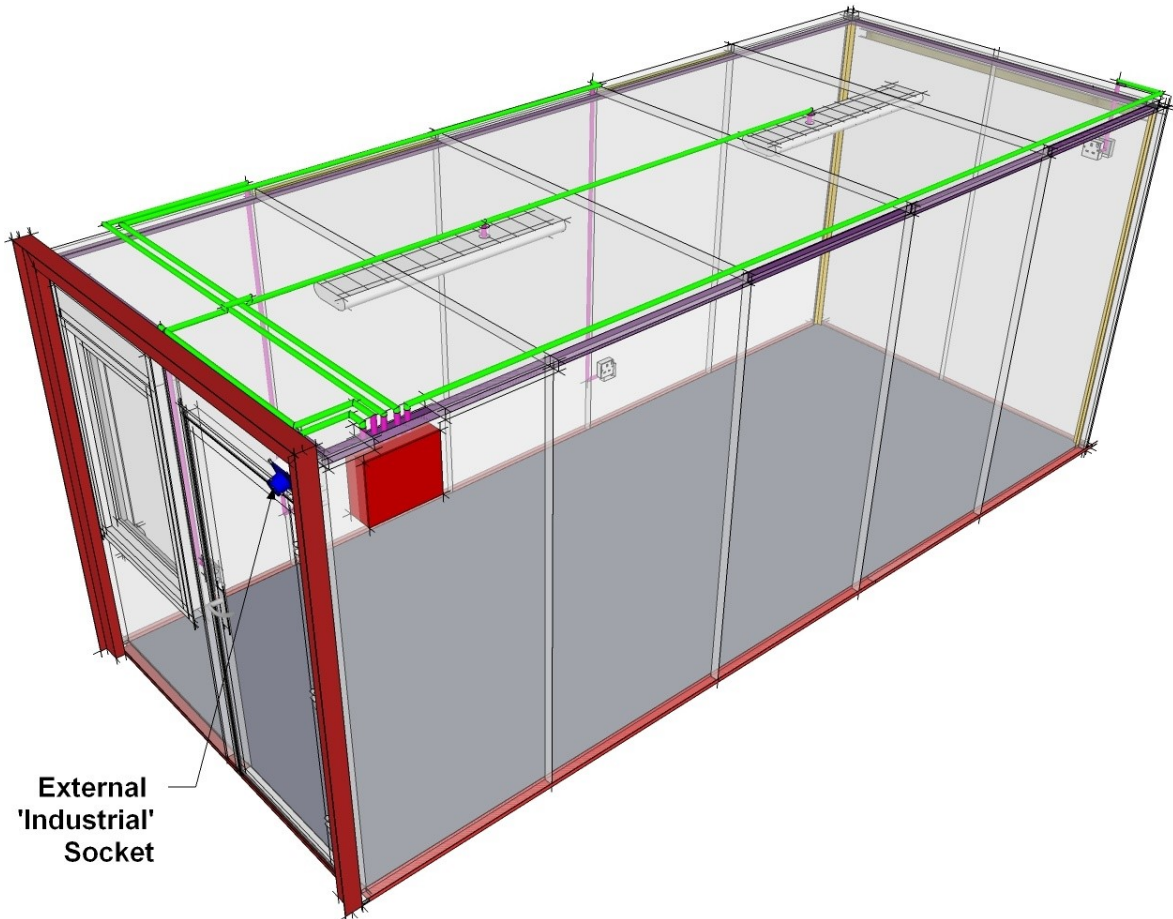
NO. OF WORKERS: 2 Workers



STEP 24B: Fix in position all electrical fittings such as sockets (13A and A/C) Connect wires/cables on each electrical fittings. All electrical works must be done or supervised by qualified electrical personnel.

DURATION OF WORKS: 30 Minutes for STEPS 20 to 25

NO. OF WORKERS: 2 Workers



STEP 25: Fix the external 'industrial socket' as shown in the photo above. All electrical works must be done or supervised by qualified electrical personnel.

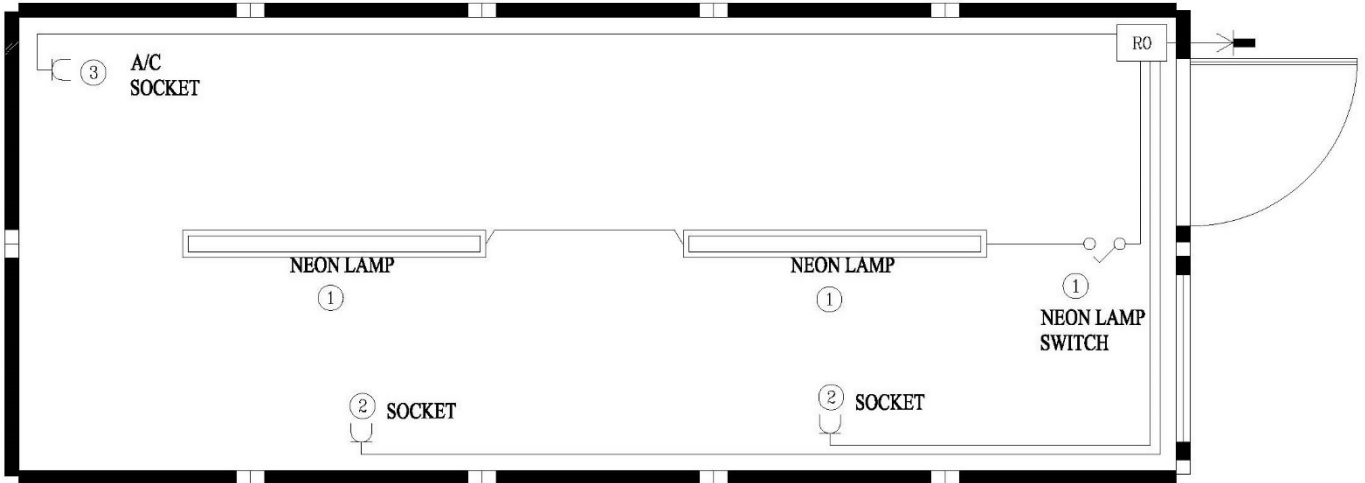
DURATION OF WORKS: 30 minutes for STEPS 20 to 25

NO. OF WORKERS: 2 Workers

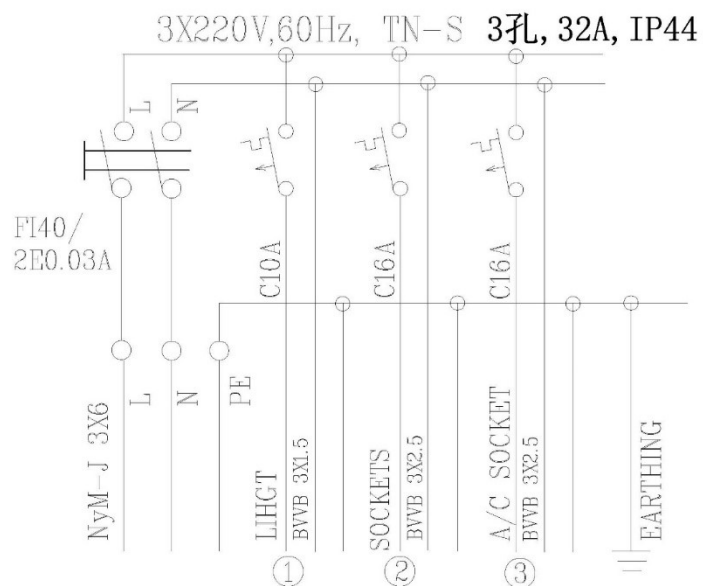


TOTAL ASSEMBLY TIME of 1 x 20ft SPEEDY KIT:

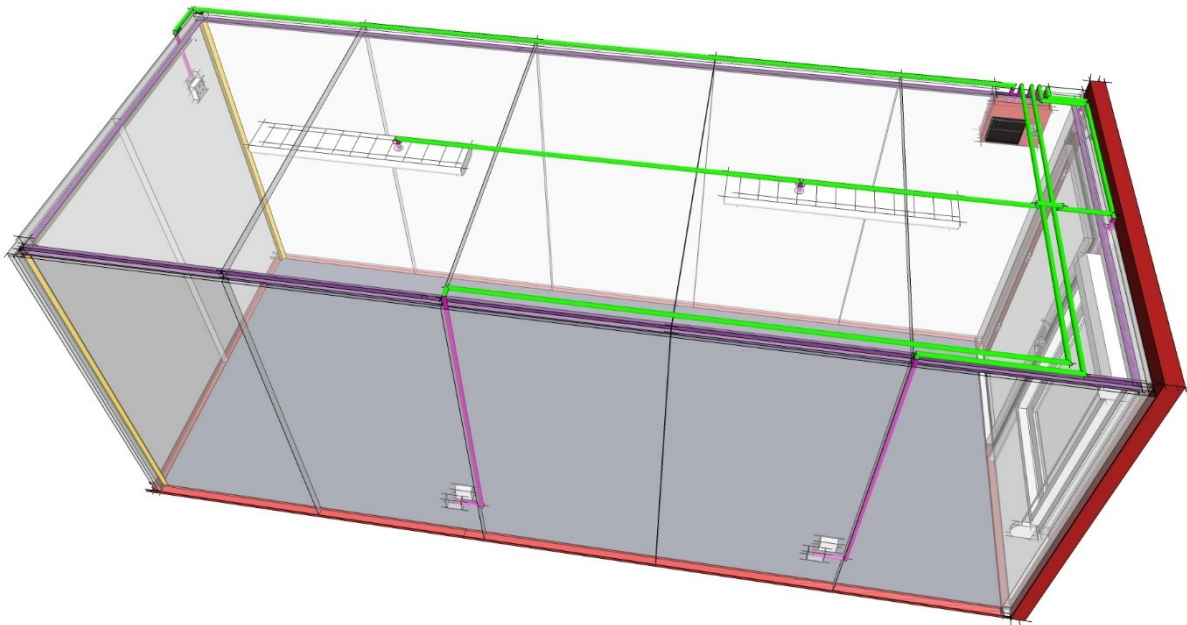
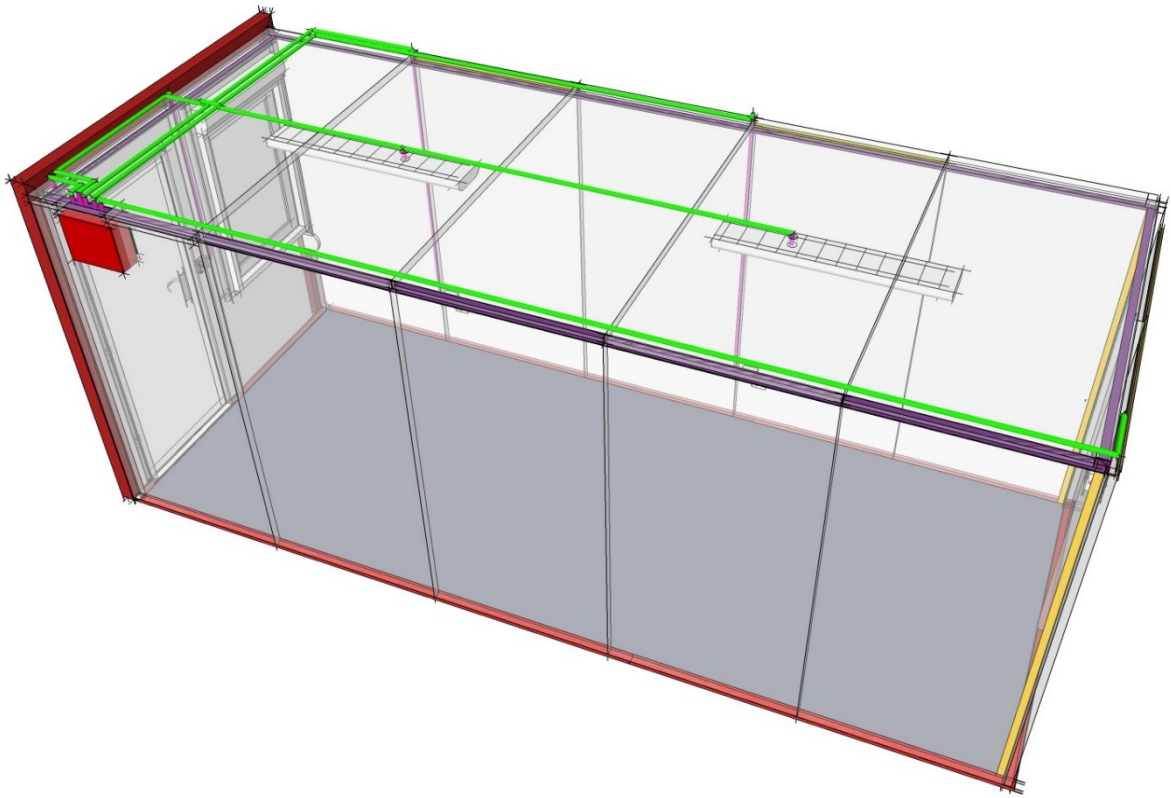
Approx. 2 hours and 30 minutes by 2 Workers



ELECTRICAL LAYOUT



SINGLE LINE DIAGRAM



3D views of Concealed Electrical Fittings.



Actual Photos of SPEEDY KIT with 'Concealed Electrical Fittings'



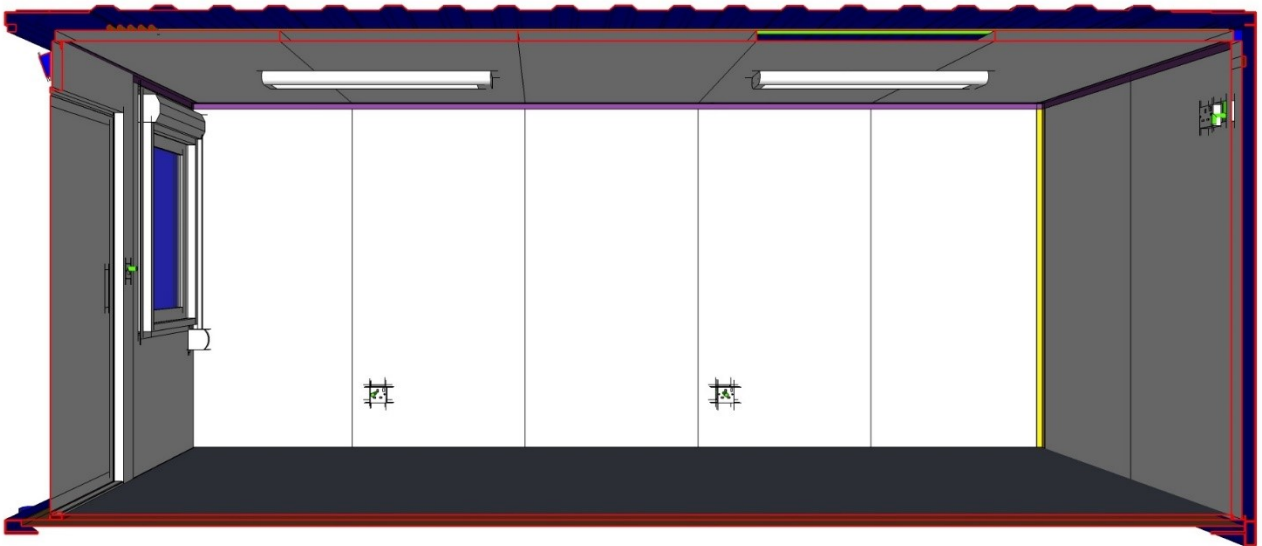


ACTUAL PHOTO OF SPEEDY KITS





3D VIEW



LONGITUDINAL SECTION

COMPLETE 20 FT. 'DRY' SPEEDY KIT